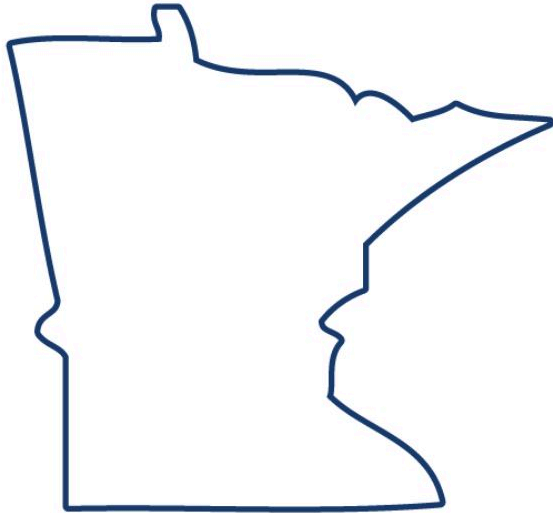


State Innovation Exchange

Multi-State Poll - Minnesota Findings
July 2020



Survey Methodology



TargetSmart designed and administered this multimodal survey. Two-hundred and ninety-six interviews were conducted online among panelists who were matched to the TargetSmart voter file (272 weighted) and 359 interviews were conducted online using text-to-web and email-to-web (64 email, 295 SMS) solicits from the TargetSmart voter file (329 weighted). In total, the survey reached 655 adults (600 weighted), age 18 or older, who are registered to vote in Minnesota. Quotas were designed to reflect the demographic and geographic distribution of registered voters in Minnesota. The data were weighted by gender, age, race on file, TargetSmart Partisan Score, TargetSmart High School Only Score, and region by media market and congressional district to ensure an accurate reflection of the population.

The credibility interval (the theoretical margin of error for a blended-methodology poll that relies partially on telephone-based probability sampling, and partially on non-probability based online panel sampling) is +/- 4.0%. The margin of error for subgroups is larger and varies. Percentage totals may not add up precisely due to rounding.

Issue Environment and the Role of State Government

Issue Environment: Key Findings

Minnesota

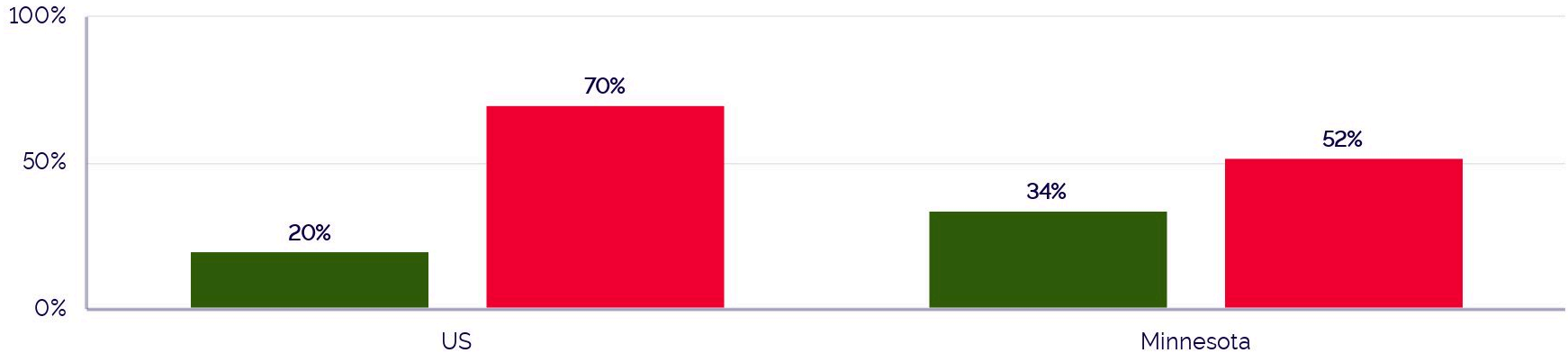
- Minnesotans are overwhelmingly pessimistic about the direction of the US (20 percent right direction, 70 percent wrong track), following the trends of other states we've seen in this body of research. Voters are more mixed, but pessimistic on net about the direction of Minnesota (34 percent right direction, 52 percent wrong track).
- In the wake of the murder of George Floyd and ensuing protest movement, we find that addressing systematic racism and the Black Lives Matter movement surfaces as a top priority among Minnesota voters, with 1-in-4 voters citing it as the most important issue facing the state (26 percent).
- It follows that over 2-in-3 voters see a role for state government in addressing systematic racism (67 percent) and a majority of voters indicate their feelings about how Black people and the Black communities are treated in America have changed over the last month in recent events (58 percent).
- The coronavirus pandemic also surfaces as a salient issue priority among Minnesota voters (cited by 19 percent of voters), however public opinion surrounding the pandemic is quite uncertain, as 39 percent of voters believe the worst of the pandemic is over, 30 percent of voters believe the worst is yet to come, and 30 percent are unsure.

Note: This survey was fielded shortly after the murder of George Floyd.

Minnesotans Highly Pessimistic About Direction of the US; More Mixed but Pessimistic on Net About Direction of the State

Direction of the US and Minnesota

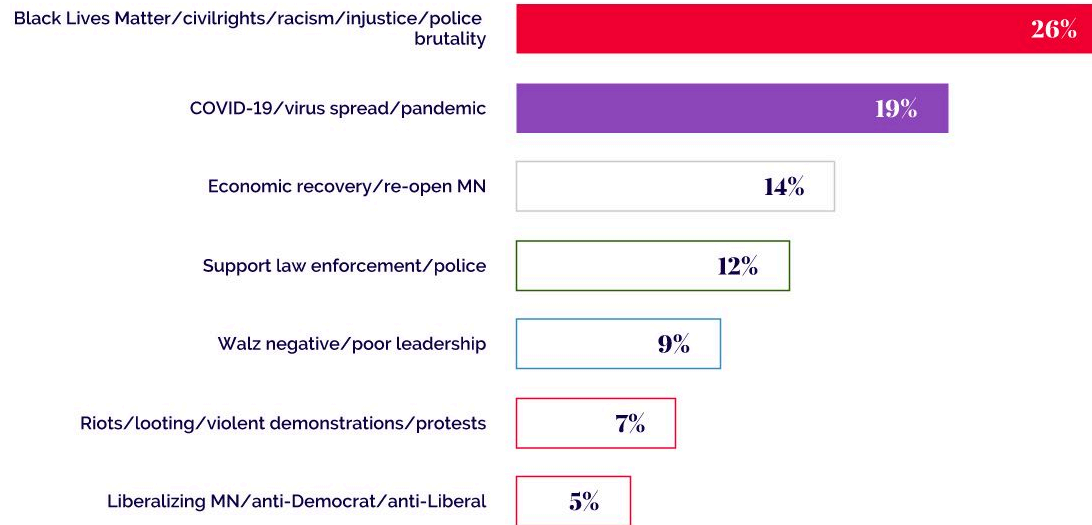
● Right Direction ● Wrong Track



5. Generally speaking, do you think that things in the United States are going in the right direction, or do you feel things have gotten pretty seriously off on the wrong track?

6. And generally speaking, do you think that things in Minnesota are going in the right direction, or do you feel things have gotten pretty seriously off on the wrong track?

Systematic Racism Surfaces as a Top Priority for Minnesota Voters; Coronavirus is a Close Second



7. What would you say is the most important issue facing the state of Minnesota these days?

Democrats Consolidated Around Racism and Black Lives Matter; Independents, Republicans Have More Diffuse Issue Priorities

Issue priorities by Party ID



ID Democrat

1. Racism/BLM - 43%
2. Coronavirus - 26%
3. Economic recovery - 14%



ID independent

1. Racism/BLM - 19%
2. Coronavirus - 17%
3. Economic recovery - 16%

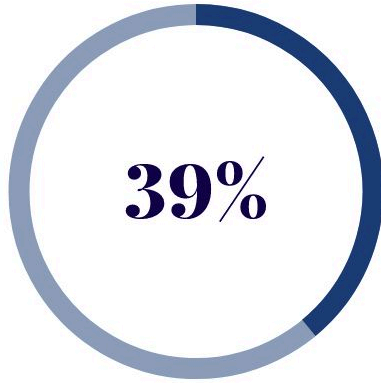


ID Republican

1. Coronavirus - 15%
2. Support law enforcement - 13%
3. Racism/BLM - 12%

Highly Uncertain Public Opinion On the State of the Coronavirus Pandemic

Worst is yet to come vs. worst is over



The worst of the coronavirus outbreak is yet to come



The worst of the coronavirus outbreak is over



Unsure

9. Do you believe....

Democrats, Women, Younger Voters Most Likely to Think Worst is Yet to Come; High Levels of Uncertainty Across the Board

State of Pandemic by Key Demographics

	Worst is yet to come	Worst is over	Unsure
All voters	39%	30%	30%
ID Democrat	56%	12%	32%
ID independent	38%	36%	27%
ID Republican	20%	50%	30%
Men	31%	41%	28%
Women	47%	21%	33%
Under 50	43%	32%	25%
Over 50	36%	29%	35%

Minnesotans Want More State Investment, Even if it Means More Taxes, By a Near 3:1 Margin

State Investment vs. Tax Cuts



State government in Minnesota should invest more in the state and its residents, ensuring they are safe, healthy, are economically secure, even if it means some people have to contribute a little more in taxes.



State government in Minnesota should keep taxes low, even if it means cutting funding for education and infrastructure, and cutting unemployment insurance and healthcare coverage.

14. And which of these statements comes closer to your own view, even if neither of them is exactly right?

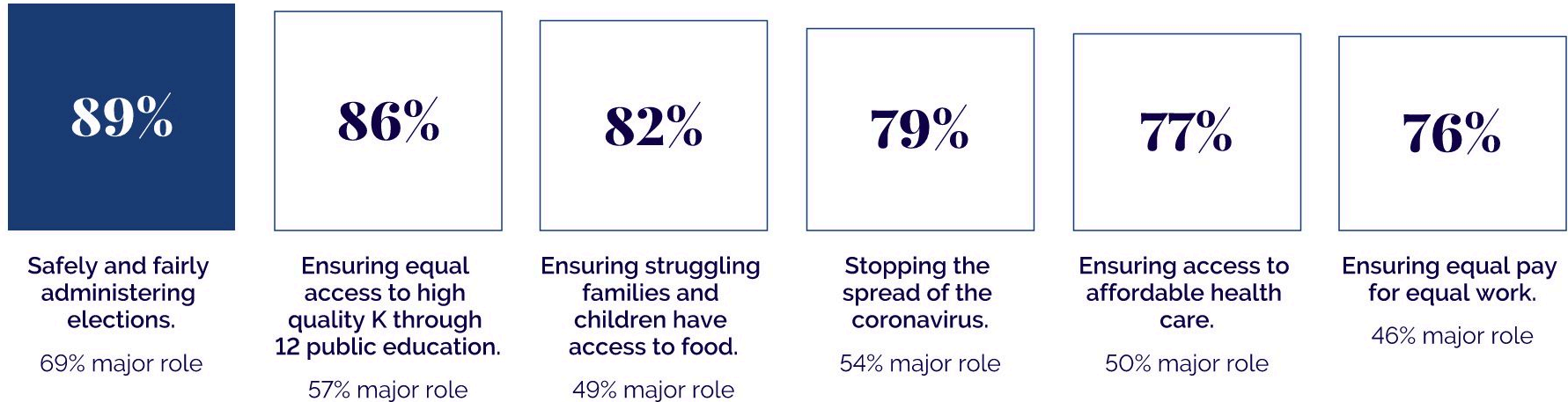
Democrats, Independents, Voters in Suburban and Urban Areas, Women Most Likely to Side With Investment Argument

Investment vs. Taxes by Key Demographics

	Invest more	Lower Taxes	Margin
All voters	56%	20%	+36
ID Democrat	89%	4%	+85
ID independent	54%	24%	+30
ID Republican	17%	39%	-22
Rural	48%	21%	+27
Suburban	57%	24%	+33
Urban	65%	15%	+51
Men	53%	27%	+26
Women	60%	13%	+47

Minnesota Voters Want State Government To Play a Major Role in Election Administration - Education and Access to Food Fall Closely Behind

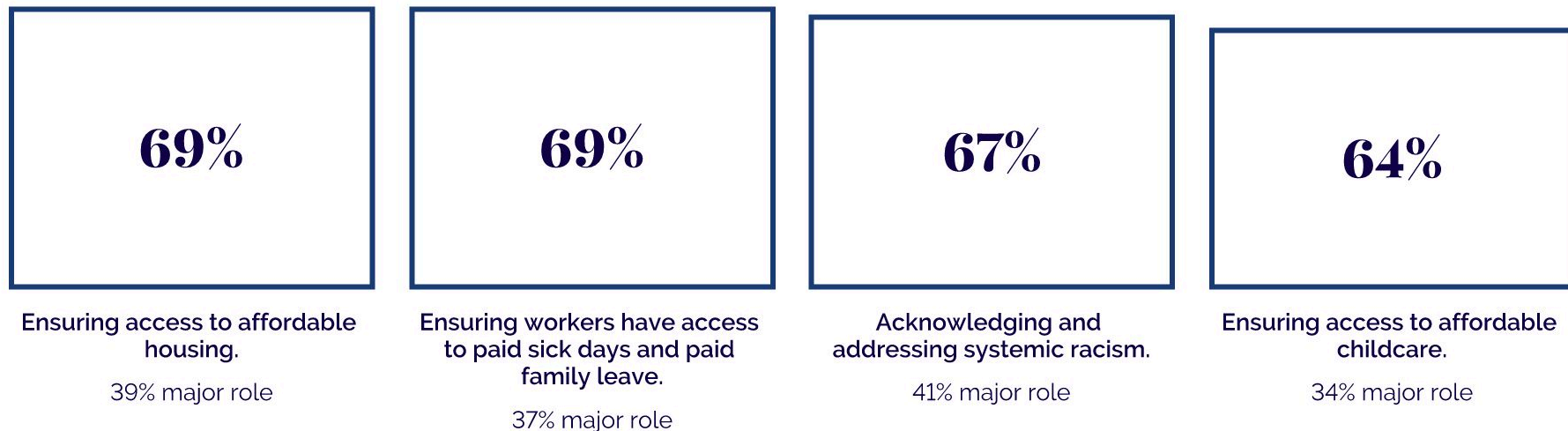
Government Involvement on Issues - top tier issues based on % major/some role



15. Please indicate whether you think state government in Minnesota should have a major role, some role, a minor role, or no real role in dealing with each of the following issues.

Most Voters See Role for Government Involvement in Housing, Paid Sick and Family Leave, Addressing Racism, and Access to Childcare

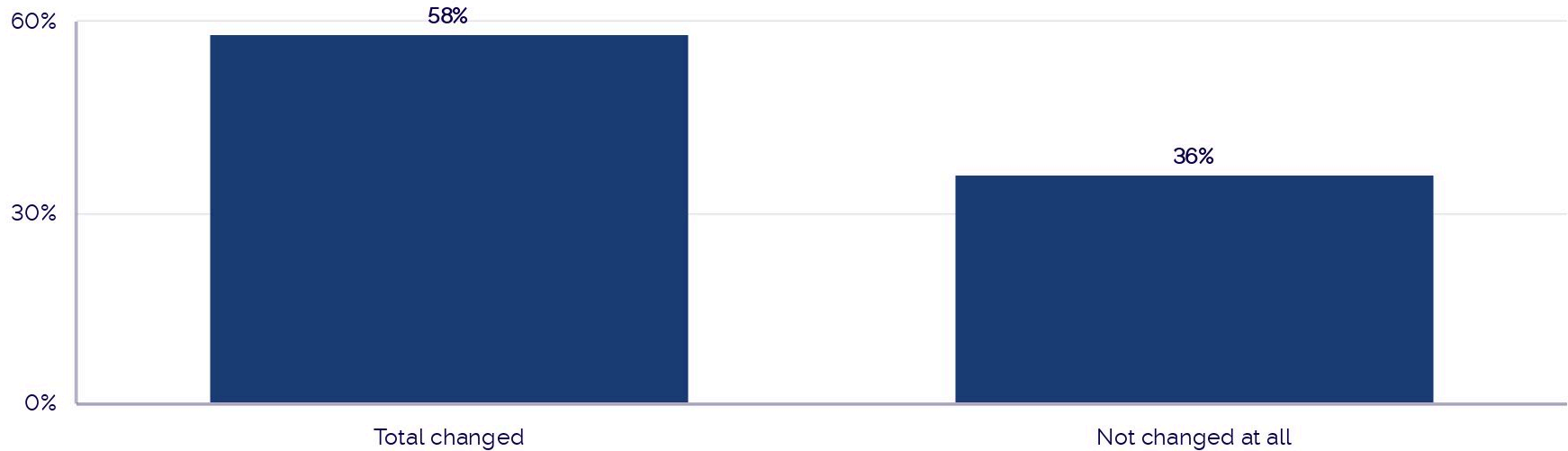
Government Involvement on Issues - second tier issues based on % major/some role



15. Please indicate whether you think state government in Minnesota should have a major role, some role, a minor role, or no real role in dealing with each of the following issues.

A Majority of Minnesotans Indicate Their Feelings Have Changed About the Treatment of Black People in America

Feelings About How Black People and Communities Are Treated



16. Would you say your feelings about how Black people and Black communities are treated in America have changed a lot, a changed a little, or not changed at all in the last month or so?

Election and Democracy Reforms

Democracy Key Findings: Government's Role, Voting Options, and Intersection with Race

Minnesota

- Minnesotans see a big role for state government in election administration -- 89 percent of voters believe state government should have a “major” or “some” role in safely and fairly administering elections.
- What's more, Minnesotans are quite optimistic about how November's elections will be administered -- over 2-in-3 voters believe they will be run well (68 percent), compared to just 22 percent of voters believing they will not be run well.
- Voting in-person on Election Day remains the most popular option for voting in November's elections (56 percent). Nearly 1-in-3 Minnesotans indicate they are planning on voting by mail (32 percent), and just 11 percent of voters indicate they plan on voting early in-person.
- A solid majority of Minnesotans acknowledge systematic racism in the voting system that has prevented Black people and communities from fully participating in our democracy, and nearly 2-in-3 voters want state government to reduce barriers that stop Black people from voting.

Democracy Key Findings: Voting Reforms

Minnesota

- Although just 1-in-3 Minnesota voters plan to vote by mail in November, voters here highly prioritize reforms to make voting by mail easier. Three-in-four voters support allowing any registered Minnesota voter to vote by mail (75 percent), and 25 percent of voters place this reform at the top of their priorities list. Likewise, 58 percent of voters support mailing all registered Minnesota voters applications to vote by mail.
- Voters are also broadly supportive of reforms to make processing mail-in ballots easier. Two-in-three voters support counting mail-in ballots postmarked by but received after Election day (63 percent) and a majority of voters support counting mail in ballots by Election Day but received up to 10 days after election day (53 percent).
- Although voting early in-person is not a very popular option among Minnesota voters, the electorate is supportive of reforms to lengthen the early voting window and letting voters.

Democracy Key Findings: Coronavirus and Voting

Minnesota

- Minnesota voters strongly agree with measures to increase safety and sanitary standards at polling places.
- Nearly 9-in-10 voters support providing poll workers with PPE like masks and gloves (88 percent).
- Likewise, 87 percent of voters support polling locations conforming with CDC guidelines on sanitation and social distancing.
- Voter are also overwhelmingly supportive of opening additional polling locations to reduce crowds and lines (85 percent), and over 1-in-5 voters rank this policy as their top priority when it comes to voting reforms. Voters are also widely opposed to consolidating polling places in anticipation of poll worker shortages.

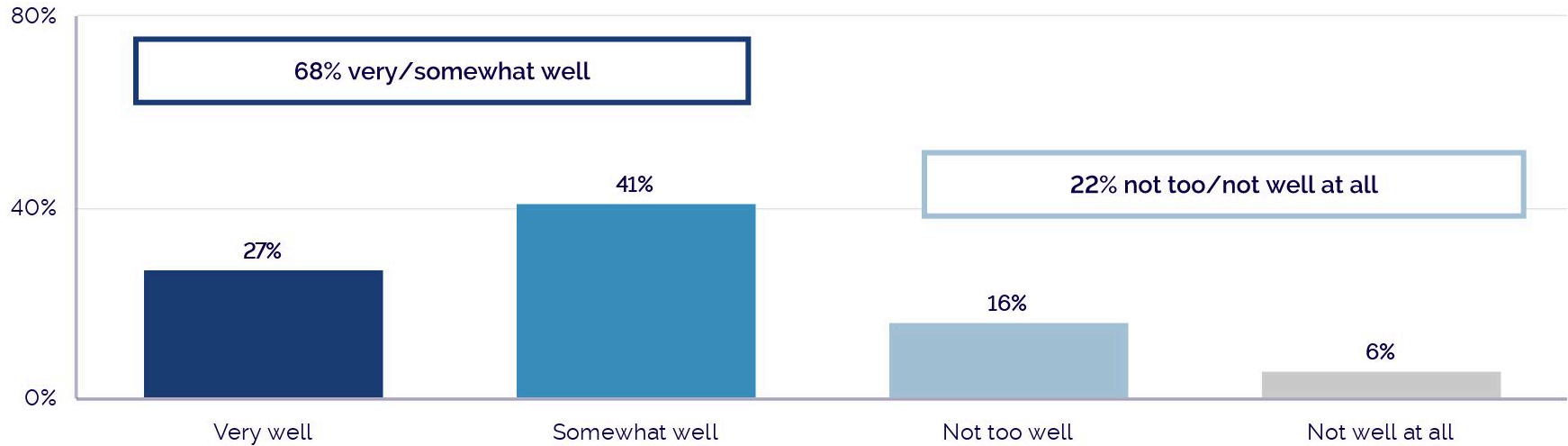
Democracy Key Findings: Voting Security

Minnesota

- While voting by mail isn't the most popular option for Minnesotans, voters place a high importance on voting security, particularly as it pertains to voting by mail.
- Eight-in-ten voters believe ballot tracking for mail-in ballots is very important (81 percent) and 53 percent of voters find this to be very important.
- Similarly, 86 percent of voters believe it is important for election officials to immediately notify voters if there is a problem with their submitted mail-in-ballot, and 72 percent of voters find this to be very important.

Over Two-in-Three Voters Believe Elections Will Be Run “Well” in Minnesota This November

November Election Administration in Minnesota

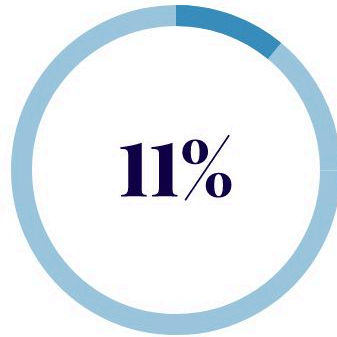


21. Switching gears a bit, do you think the elections this November in Minnesota will be run and administered very well, somewhat well, not too well, or not well at all?

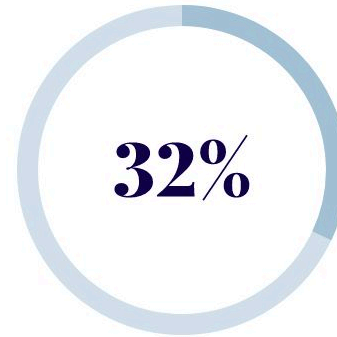
A Majority of Minnesotans Plan to Vote In-Person on Election Day in November's Elections



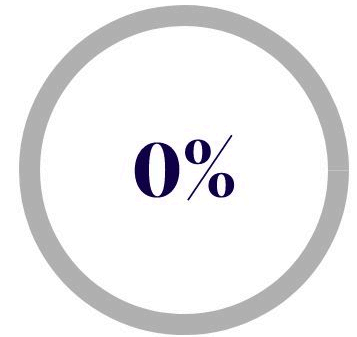
In-person at my local
polling place on Election
Day



In-person at an early
voting center before
Election Day



By mail, using my state's
vote by mail or absentee
voter system



I am not voting

4. And how do you intend to vote in the general election for President and other offices this November?

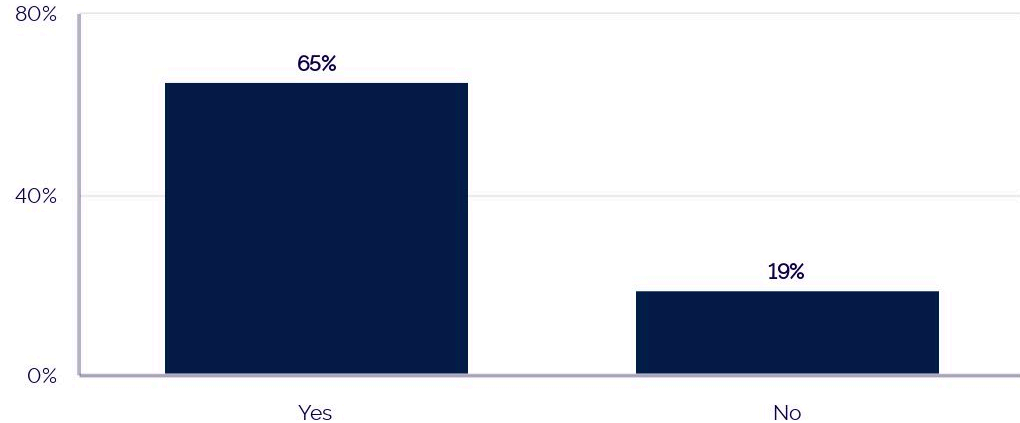
Bare Majority of Minnesotans Acknowledge Racism as a Barrier to Voting; Over 2-in-3 Voters Want Barriers that Prevent Black People from Voting Removed

50% of Minnesota voters agree with the following statement:

"Systemic racism has prevented Black people and other people of color from being able to fully participate in our democracy."

38% disagree with this statement.

Reduce Barriers That Stop Black People From Voting



18. Do you believe the state of Minnesota should reduce barriers that stop Black people from voting?

22. Please indicate whether you strongly agree, somewhat agree, somewhat disagree, or strongly disagree with the following statements about different ways people can vote in the United States.

Near Unanimous Support for Increased Safety Standards at Polling Places

Voting Reforms - % total agree

88%

Poll workers should be provided with personal protective equipment like masks and gloves.

71% strongly agree

87%

Polling locations should conform with CDC guidelines on sanitation and social distancing.

66% strongly agree

22. Please indicate whether you strongly agree, somewhat agree, somewhat disagree, or strongly disagree with the following statements about different ways people can vote in the United States.

The Majority of Voters Have Clear Understanding of Alternatives to In-Person Voting; Voters Mixed on Vote by Mail Reliability

Voting Reforms - % total agree

69%

I have a clear understanding of the in-person early voting options available to me in my state.

38% strongly agree

66%

I have a clear understanding of how to request a vote-by-mail ballot in my state.

39% strongly agree

47%

I am concerned that the mail system in my state cannot be relied upon to get vote-by-mail ballots to election officials in time for them to be counted.

22% strongly agree

43% total disagree

35%

I don't have enough information about how to take advantage of alternatives to voting in-person on Election Day.

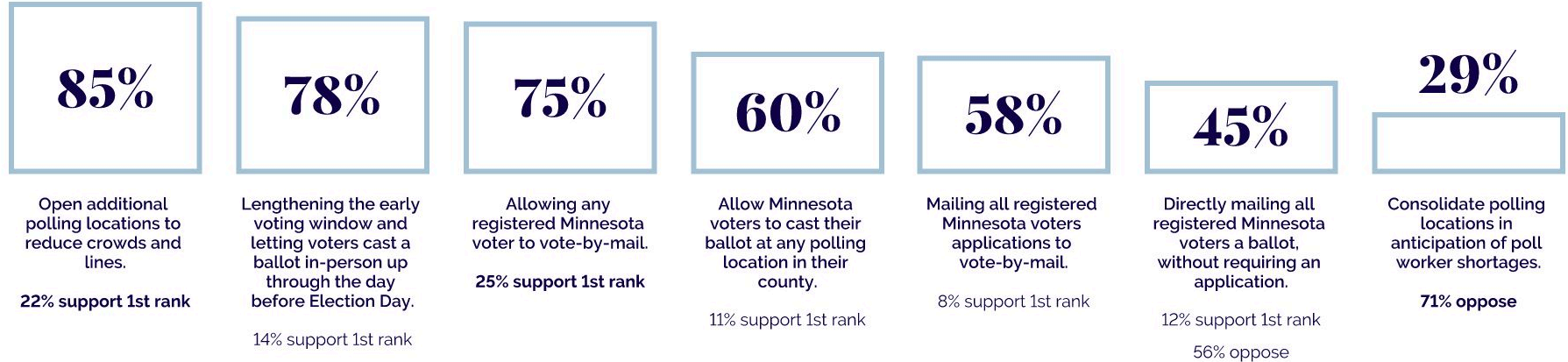
15% strongly agree

55% total disagree

22. Please indicate whether you strongly agree, somewhat agree, somewhat disagree, or strongly disagree with the following statements about different ways people can vote in the United States.

Reforms to Make Voting Easier and More Accessible During the Pandemic Are Broadly Popular; Voters Oppose Consolidating Polling Locations

Voting Method Reforms - % Total Support



23. Switching gears a bit, below are several reforms related to voting in Minnesota. By dragging the reforms to the "support" or "oppose" box, please indicate which ones you support and which ones you oppose. Then, by dragging the reforms up and down within each box, please indicate which ones you support the MOST and which ones you oppose the MOST.

Various Ballot Return Options Are Popular

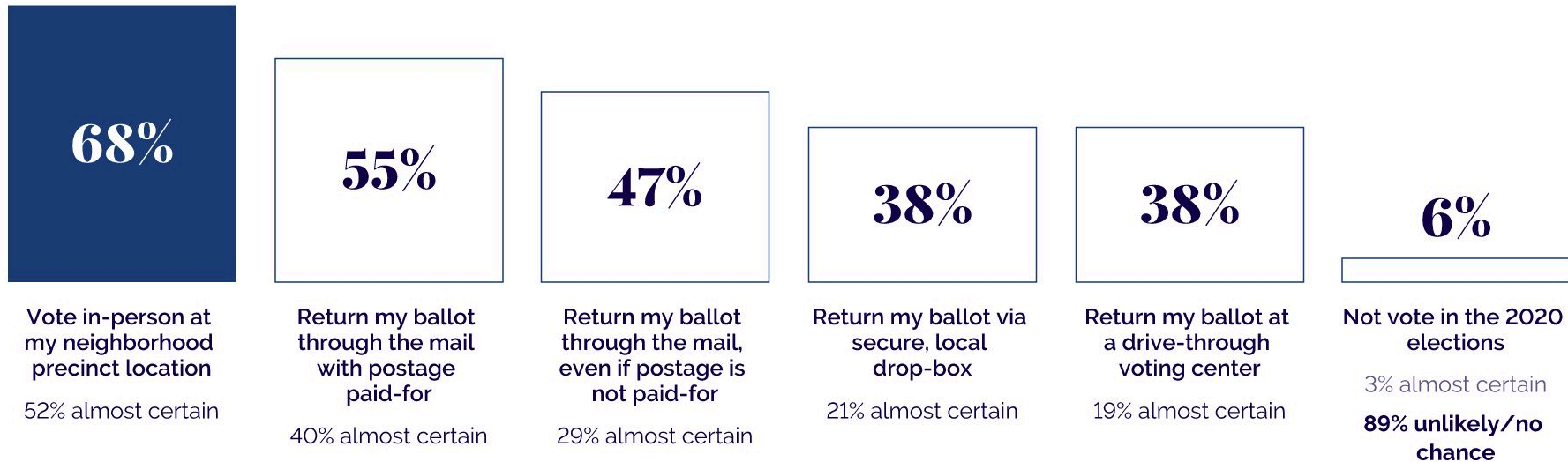
Ballot Return Reforms - % Total Support



24. And to help citizens vote safely during the coronavirus outbreak, elections officials in Minnesota are considering several ways voters can cast or return their ballot in this year's elections. By dragging the proposals to the "support" or "oppose" box, please indicate which ones you support and which ones you oppose. Then, by dragging the proposals up and down within each box, please indicate which ones you support the MOST and which ones you oppose the MOST.

Minnesotans Likely to Vote In-Person; Prepaid Postage Increases Likelihood of Voting by Mail

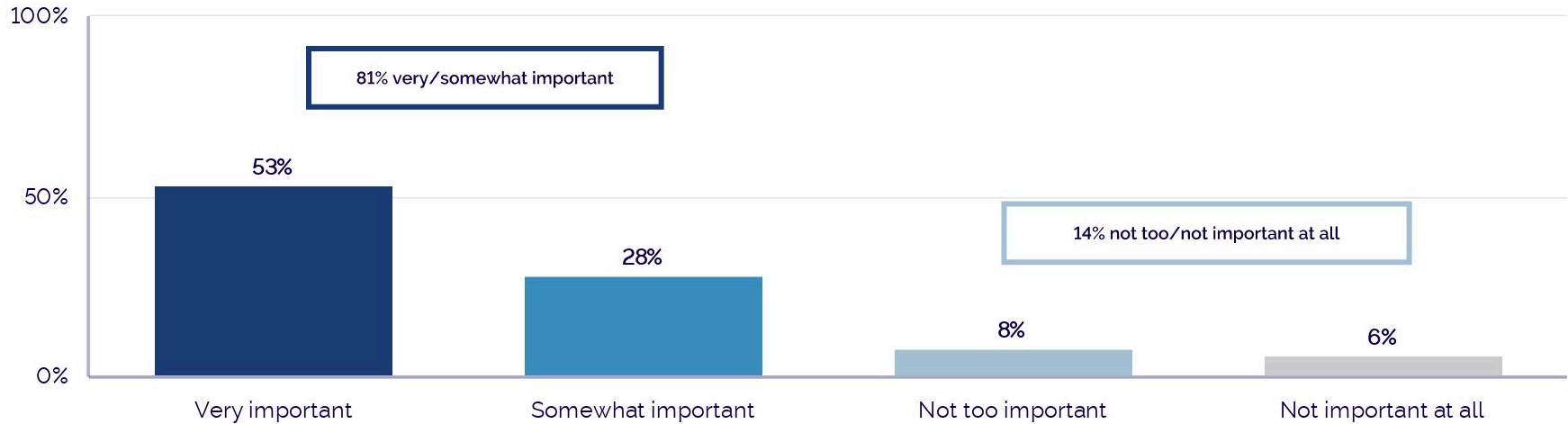
Ballot Return Methods - % Almost Certain/Good Chance



25. And assuming each of the following were available to you in Minnesota, how likely would you be to use each of these options for casting your vote or returning your ballot in the upcoming election?

Ballot Tracking Important to 8-in-10 Minnesota Voters; Majority Indicate it is “Very” Important

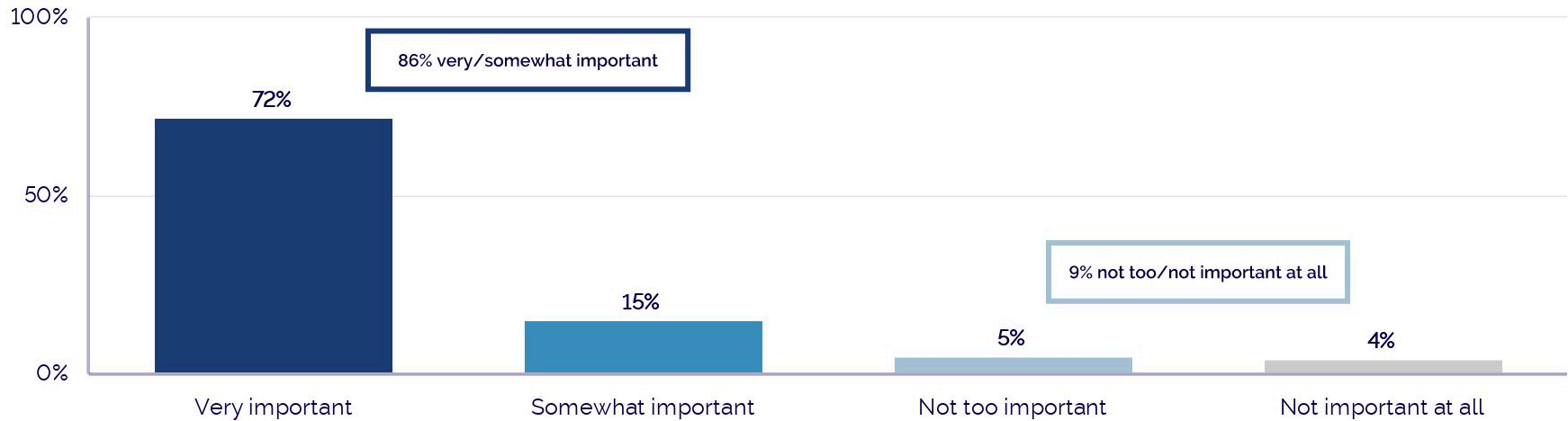
Ballot Tracking Importance



26. And do you think it is very important, somewhat important, not too important, or not important at all for election officials in Minnesota to allow voters to track the status of their mail-in ballot in case any issues come up?

Consensus Public Opinion Around Notifying Voter If There is a Problem With Their Mail-In Ballot

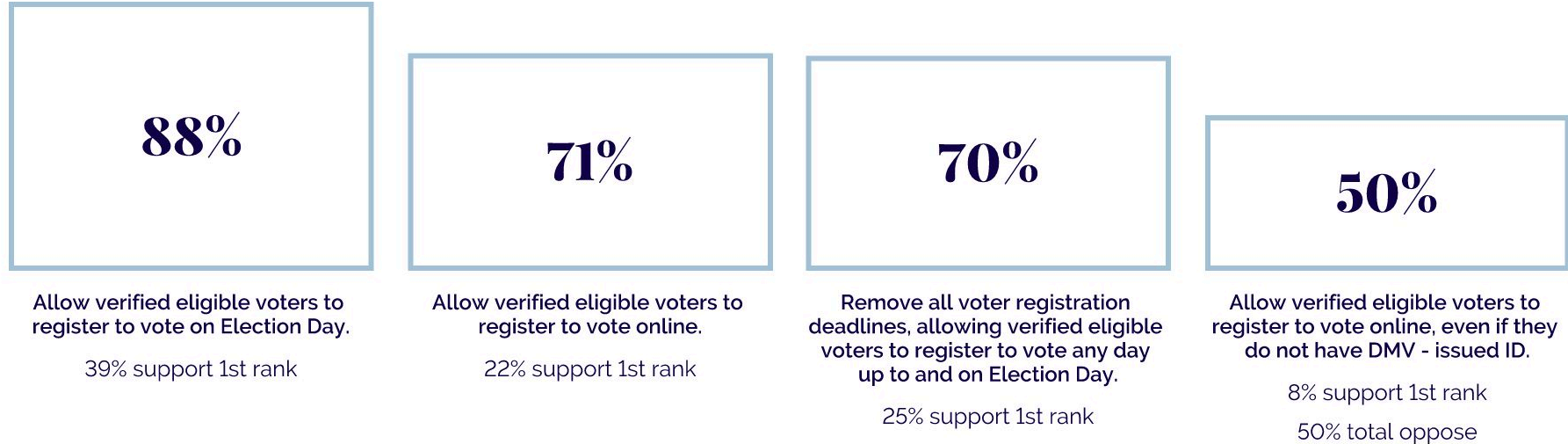
Notification of Mail-in-Ballot Issues



27. And do you think it is very important, somewhat important, not too important, or not important at all for election officials in Minnesota to immediately notify voters if there is a problem with their submitted mail-in ballot, such as if they forgot to sign their ballot, so the voter has an opportunity to correct it.

But Online Registration Generally Popular and Voters Are Broadly Supportive of State's Same Day Registration Law

Voter Registration Reforms - % Total Support



28. Switching gears a bit, below are several reforms related to voter registration in Minnesota. By dragging the reforms to the "support" or "oppose" box, please indicate which ones you support and which ones you oppose. Then, by dragging the reforms up and down within each box, please indicate which ones you support the MOST and which ones you oppose the MOST.

Fiscal Policy and the Economy

Economic and Fiscal Key Findings: Coronavirus and the Economy

Minnesota

- When it comes to the debate between economic vitality and public health, Minnesota voters express marginally more concern about health and safety (51 percent) than they do about the pandemic's impact on jobs and income (40 percent).
- Furthermore, a majority of voters believe businesses should be required to provide safe working conditions and be held liable if they do not (50 percent). Just 27 percent of voters believe businesses should be protected from liability if a worker gets sick on the job.
- Broad economic concerns relating to the coronavirus pandemic surface. Eighty-five percent of voters are concerned about small businesses permanently closing in Minnesota and 84 percent of voters are concerned about Minnesotans losing work and income.

Economic and Fiscal Key Findings: Budget and Revenue

Minnesota

- Minnesota voters want more state investment in core services, even if it means they have to pay more in taxes. By a near 3:1 margin, voters believe state government in Minnesota should invest more in its residents to ensure they are safe, healthy, and economically secure (56 percent) over state government keeping taxes low and cutting funds to key services like education, unemployment, and health insurance (20 percent).
- Furthermore, 2-in-3 voters express concern about the state of Minnesota losing tax revenues and facing budget cuts in the wake of the pandemic (66 percent).
- At the same time, Minnesotans want corporations and the wealthy to pay their fair share and support a wide array of progressive revenue streams, including closing corporate tax loopholes, increasing taxes on companies that pollute, increasing taxes on the wealthiest Minnesotans, and increasing taxes on profitable corporations.

Economic and Fiscal Key Findings: Economy and Workplace Policies

Minnesota

- Minnesotans believe state government should play an active role in addressing systematic racism (67 percent) and 55 percent of voters believe the state of Minnesota should address economic barriers faced by Black people and the Black community.
- Likewise, consensus public opinion emerges around state government making pay equity a reality, as 76 percent of voters believe state government should play a role in ensuring equal pay for equal work.
- A bare majority of voters are supportive of extending the length of time laid-off workers can receive unemployment benefits and increasing the amount they receive (53 percent).
- Most voters also believe state government should play a role in ensuring workers have access to paid sick and family leave (69 percent) and access to affordable childcare (64 percent).
- It follows that 79 percent of voters support creating an insurance plan to provide paid family and medical leave for employees, 78 percent support requiring workplaces to provide sick days, and 77 percent support eliminating tax breaks for corporations that don't offer paid leave to their employees.

Economic and Fiscal Key Findings: Health Policy

Minnesota

- Policies relating to health care and health insurance surface as some of the top testing economic proposals in this survey.
- Near-consensus public opinion emerges around the following policies related to health insurance and health care:
- *Banning the practice of surprise medical billing (92 percent).*
- *Limiting what drug companies can charge for prescription drugs (90 percent).*
- *Extending grace periods to pay health insurance bills (88 percent).*
- *Offering Minnesotans public health insurance plans (88 percent).*

Minnesotans Want More State Investment, Even if it Means More Taxes, By a Near 3:1 Margin

State Investment vs. Tax Cuts



State government in Minnesota should invest more in the state and its residents, ensuring they are safe, healthy, are economically secure, even if it means some people have to contribute a little more in taxes.

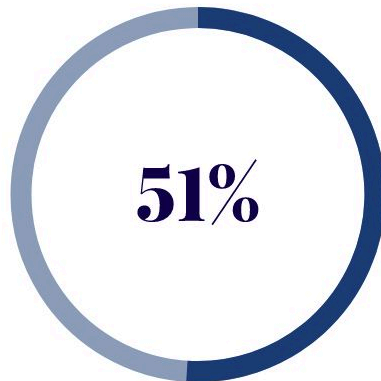


State government in Minnesota should keep taxes low, even if it means cutting funding for education and infrastructure, and cutting unemployment insurance and healthcare coverage.

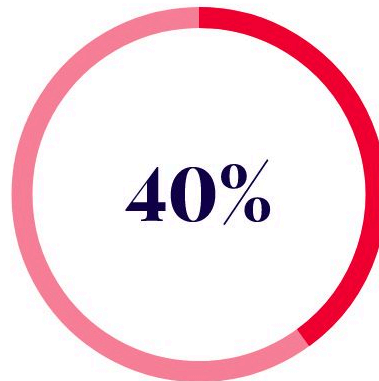
14. And which of these statements comes closer to your own view, even if neither of them is exactly right?

Voters A Bit More Likely to Express Concern About the Pandemic's Impact on Health and Safety Than Impact on Jobs and Income

Health and safety vs. jobs and income



The coronavirus outbreak's impact on health and safety



The coronavirus outbreak's impact on jobs and income.

10.And what would you say concerns you more...

Democrats, Voters in Urban Areas, Women Most Concerned About Health and Safety

Health and Safety vs. Jobs and Income by Key Demographics

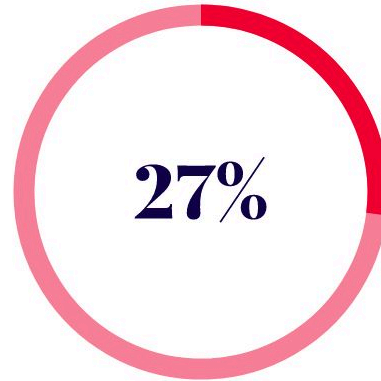
	Health and Safety	Jobs and Income	Margin
All voters	51%	40%	+11
ID Democrat	77%	19%	+57
ID independent	42%	45%	-4
ID Republican	29%	63%	-34
Rural	45%	43%	+2
Suburban	49%	44%	+5
Urban	60%	32%	+28
Men	47%	48%	-
Women	53%	37%	+17

A Majority of Voters Side With Workplace Safety Argument Over Liability Protections for Corporations

Workplace safety requirements vs. liability protections for corporations



Required to provide safe working conditions and should be penalized if workers get sick due to corporate negligence.

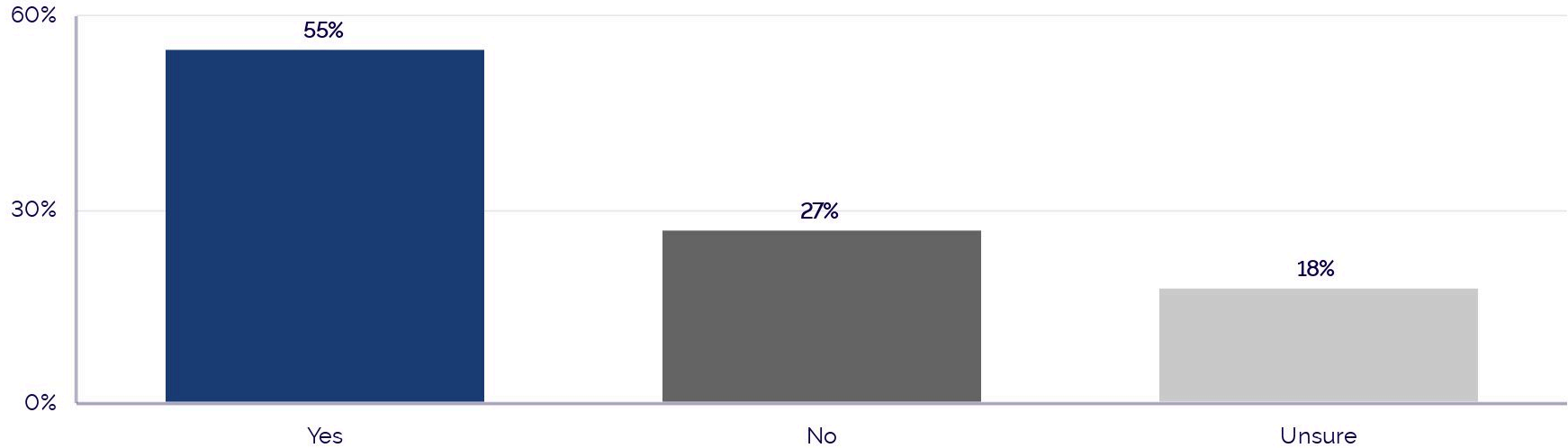


Protected from liability if workers get sick on the job so they can get people back to work.

11. And do you think businesses in Minnesota should be...

A Majority of Minnesotans Want State Government To Address Economic Barriers Black People And Communities Face

Address Economic Barriers Faced by Black People and Communities



17. Do you believe the state of Minnesota should address economic barriers faced by Black people and the Black community?

Small Business Loans and Health Insurance Reforms Are Top Economic Priorities for Minnesota Voters

Top Tier Economic Proposals - % Total Support



19. Now, what follows below is a list of proposals being considered by the state legislature in Minnesota in response to the coronavirus outbreak. By dragging the proposals to the "support" or "oppose" box, please indicate which ones you support and which ones you oppose. Then, by dragging the proposals up and down within each box, please indicate which ones you support the MOST and which ones you oppose the MOST.

Paid Sick and Family Leave Policies Also Surface As Top Priorities For Minnesotans

Top Tier Economic Proposals - % Total Support

79%

Creating an insurance plan to provide paid family and medical leave for employees to care for a sick family member, bond with a new baby or recover from a major illness or injury.

6% support 1st rank

78%

Requiring workplaces to provide paid sick days to their employees.

9% support 1st rank

77%

Eliminating tax breaks for corporations and large businesses that don't offer paid sick and family leave and health care to their employees.

11% support 1st rank

19. Now, what follows below is a list of proposals being considered by the state legislature in Minnesota in response to the coronavirus outbreak. By dragging the proposals to the "support" or "oppose" box, please indicate which ones you support and which ones you oppose. Then, by dragging the proposals up and down within each box, please indicate which ones you support the MOST and which ones you oppose the MOST.

Tax Credit and Medicaid Expansion Are Also Widely Supported Overall

Middle Tier Economic Proposals - % Total Support

72%

Expanding the number of people who can get healthcare through Medicaid to cover more uninsured people who otherwise can't afford healthcare coverage.

10% support 1st rank

67%

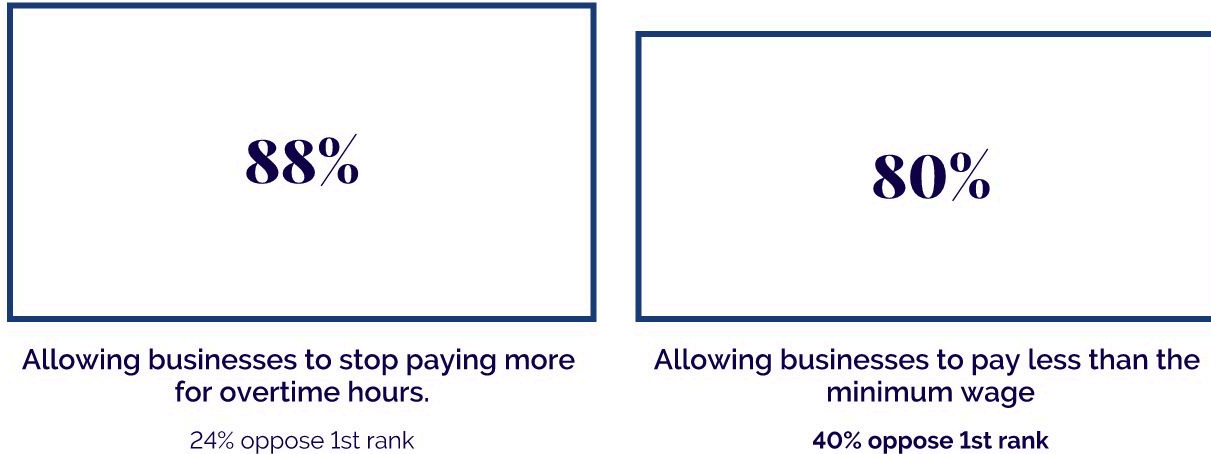
Protecting patients from having to pay the costs not covered by their insurance when treated at an out-of-network hospital or by an out-of-network doctor.

4% support 1st rank

19. Now, what follows below is a list of proposals being considered by the state legislature in Minnesota in response to the coronavirus outbreak. By dragging the proposals to the "support" or "oppose" box, please indicate which ones you support and which ones you oppose. Then, by dragging the proposals up and down within each box, please indicate which ones you support the MOST and which ones you oppose the MOST.

Minnesotans Reject Anti-Worker Policies

Bottom Tier Economic Proposals - % Total Oppose



19. Now, what follows below is a list of proposals being considered by the state legislature in Minnesota in response to the coronavirus outbreak. By dragging the proposals to the "support" or "oppose" box, please indicate which ones you support and which ones you oppose. Then, by dragging the proposals up and down within each box, please indicate which ones you support the MOST and which ones you oppose the MOST.

Minnesotans Divided on Extending the Length of Time Laid-Off Workers Can Receive Unemployment Benefits

Bottom Tier Economic Proposals - % Total support

53%

Extending the length of time that laid-off workers can receive unemployment compensation and increasing the amount that they receive.

5% support 1st rank

47% total oppose

19. Now, what follows below is a list of proposals being considered by the state legislature in Minnesota in response to the coronavirus outbreak. By dragging the proposals to the "support" or "oppose" box, please indicate which ones you support and which ones you oppose. Then, by dragging the proposals up and down within each box, please indicate which ones you support the MOST and which ones you oppose the MOST.

Democrats, Younger Voters, and Women Most Supportive of Extending Unemployment Benefits

Extending length of unemployment benefits by key demographics

	Support	Oppose
All voters	53%	47%
ID Democrat	73%	27%
ID independent	47%	54%
ID Republican	33%	67%
Under 50	60%	40%
Over 50	48%	52%
Men	49%	51%
Women	57%	43%

Array of Revenue Raisers Supported by Minnesota Voters

Top Tier Revenue Proposals - % Total Support



20. As you may know, states, counties, and towns across the country are seeing tax receipts and tax revenues fall dramatically due to the coronavirus crisis and economic slowdown. Below are some proposals that are being considered to raise revenue for the state of Minnesota to prevent large budget cuts to things like education, health care, infrastructure, and human services. By dragging the proposals to the "support" or "oppose" box, please indicate which ones you support and which ones you oppose. Then, by dragging the proposals up and down within each box, please indicate which ones you support the MOST and which ones you oppose the MOST.

Increasing Sales Taxes, Capital Gains Taxes, and Motor Vehicle Fees Far Less Popular

Bottom Tier Revenue Proposals - % Total Support

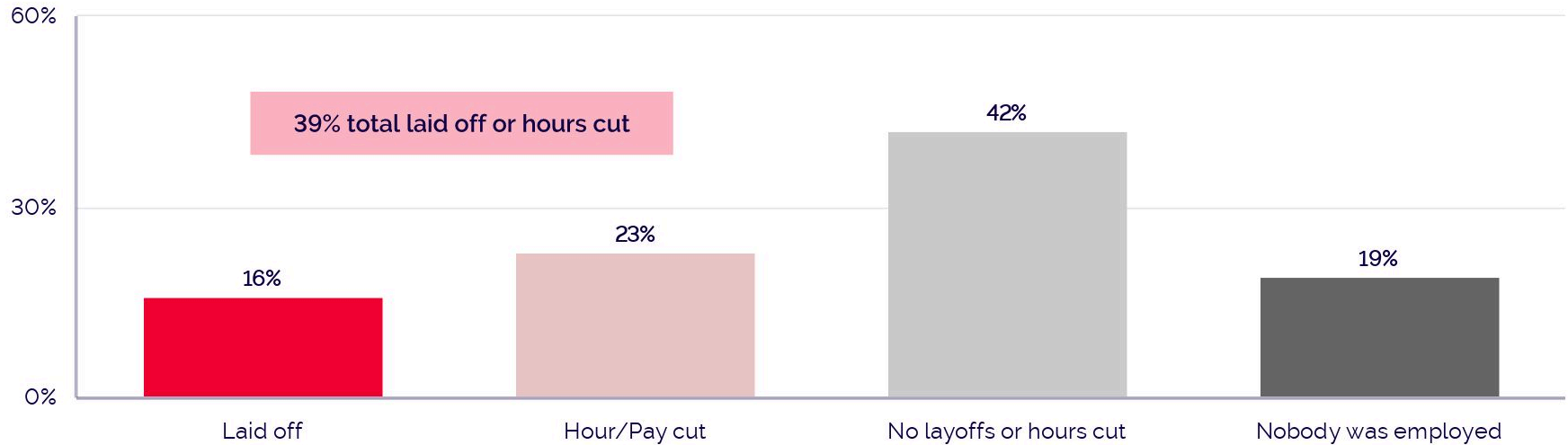


20. As you may know, states, counties, and towns across the country are seeing tax receipts and tax revenues fall dramatically due to the coronavirus crisis and economic slowdown. Below are some proposals that are being considered to raise revenue for the state of Minnesota to prevent large budget cuts to things like education, health care, infrastructure, and human services. By dragging the proposals to the "support" or "oppose" box, please indicate which ones you support and which ones you oppose. Then, by dragging the proposals up and down within each box, please indicate which ones you support the MOST and which ones you oppose the MOST.

Coronavirus

Nearly 4-in-10 Minnesota Voters Have Been Laid Off or Had Their Hours or Pay Cut

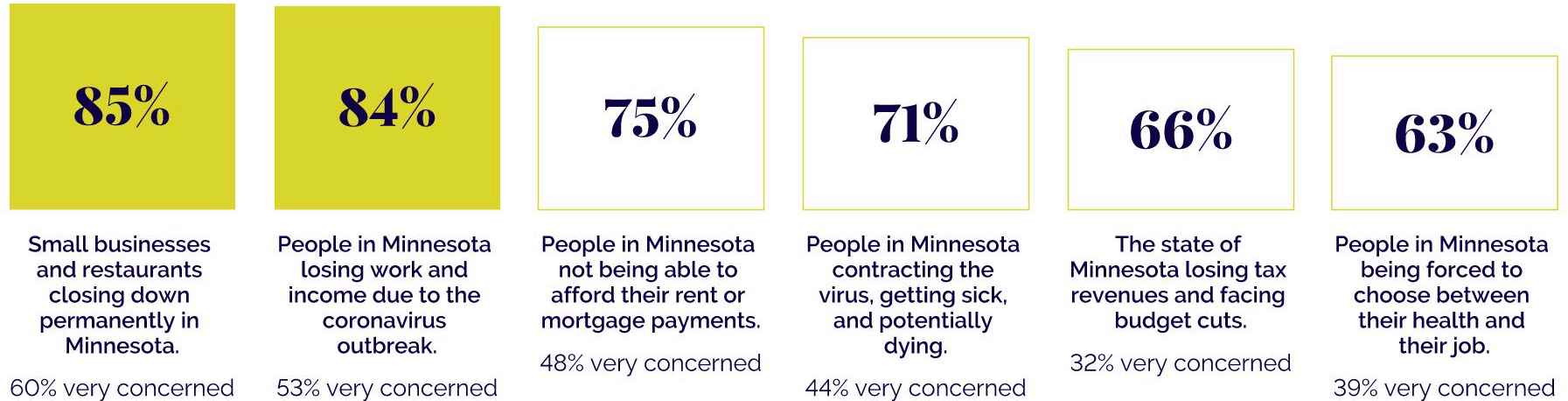
Coronavirus Impact



8. Have you or any member of your household been laid off, had work hours reduced, or their pay cut as a result of the coronavirus outbreak, or was nobody in your household employed before the outbreak?

Small Business Closures and Employment Surface As Most Salient Coronavirus Concerns

Top Tier Concerns - % total concerned



Q.13 Please indicate if you are very concerned, somewhat concerned, a little concerned, or not concerned at all about each of the following concerns people in Minnesota might have due to the coronavirus outbreak.

A Majority of Voters Also Express Concerns About the Disproportionate Impact Coronavirus Has on Black Communities

Second Tier Concerns - % total concerned

54%

The coronavirus outbreak preventing Minnesota citizens from voting in this year's elections.

31% very concerned

51%

The disproportionate impact of the coronavirus on the Black community.

30% very concerned

Q.13 Please indicate if you are very concerned, somewhat concerned, a little concerned, or not concerned at all about each of the following concerns people in Florida might have due to the coronavirus outbreak.

Cross Partisan Concern Around Small Business Closures and Loss of Work

Top Coronavirus Concerns by Party ID - % total concerned



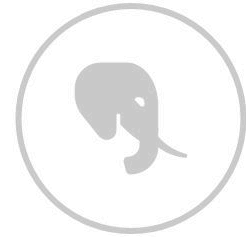
ID Democrat

1. Losing work and income - 93%
2. Contracting coronavirus - 90%
3. Small business closures - 86%



ID independent

1. Small business closures - 81%
2. Losing work and income - 77%
3. Rent and mortgage payments - 75%



ID Republican

1. Small business closures - 90%
2. Losing work and income - 80%
3. Rent and mortgage payments - 63%

Q.13 Please indicate if you are very concerned, somewhat concerned, a little concerned, or not concerned at all about each of the following concerns people in Minnesota might have due to the coronavirus outbreak.

Recommendations

Democracy and Voting Narrative

- Minnesotans want state government to play an active role in election administration, and most voters are confident in it's ability to do so.
- Voting in-person on Election Day remains the most popular voting option among Minnesotants, however about 1-in-3 voters plan to vote-by-mail. This narrative should be centered on **ensuring safe voting and secure elections, regardless of how Minnesotans vote.**
- When it comes to voting in person, legislators should highlight efforts to increase the number of polling places to reduce lines and sanitary measures put in place to ensure polling places conform to CDC guidelines.
- Although voting by mail is less popular, legislators should highlight their efforts to make the process more secure and reliable through improved ballot tracking and a system that provides recourse for those who experience issues with casting their vote by mail.

Fiscal Policy and Economy Narrative

- Overall, Minnesota voters want more state investment in services, and they support an array of progressive avenues for raising revenue to make this happen.
- Voters here have some acute economic concerns related to the pandemic, particularly around small business closures, loss of work and income, and housing. We recommend centering a balanced response to the coronavirus that prioritizes the tools necessary to slow the spread of infection so that businesses can re-open safely and people can go back to work safely.
- Workplace policies should be a center point of this narrative -- legislators should highlight their efforts on policies that benefit both the employee and employer, including paid family leave, paid sick leave, and affordable childcare.
- Health care policy should also play a large role in the economic narrative as several policies relating to affordable health care during the pandemic are strongly supported by Minnesotans. Legislators should highlight their efforts to ban surprise medical billing, lower prescription drug costs, create public insurance options, and extend grace periods for paying insurance bills.

Questions?