

Maryland Statewide Issues Poll

Prepared for the **State Innovation Exchange** *and* **Strong Future Maryland** *by*
TargetSmart



Survey Methodology



TargetSmart designed and administered this multi-modal survey. The survey reached **552** adults (500 weighted), age 18 or older, who indicated they were registered to vote in Maryland. The survey was conducted **January 10-17, 2022**, via live phones with trained operators, online via a link from an email, and through Dynata's web panel and matched back to the voter file.

The phone sample was randomly selected from TargetSmart's enhanced voter file. Eighteen percent of respondents were reached on phones (29% weighted). Thirty-nine percent of respondents completed the survey online and were reached via an email or direct SMS invite (31% weighted). Forty-three percent of respondents were recruited from Dynata's web panel and matched to TargetSmart's voter file (40% weighted).

Quotas were assigned to reflect the demographic distribution of **registered voters voters in Maryland**. The data were weighted by gender, age, race from file, party registration, TargetSmart Midterm General Turnout Score, TargetSmart High School Only Score, and region by county to ensure an accurate reflection of the population.

Percentage totals may not add up precisely due to rounding. The credibility interval (the theoretical margin of error for a blended-methodology poll that relies partially on telephone-based probability sampling, and partially on non-probability based online panel sampling) is **+/- 4.4%**.



Key Findings



Workplace protections

Maryland voters broadly support prohibiting worker misclassification, wage boards, and fair scheduling.



Climate

Half of Maryland voters are very concerned about climate change, and the majority of voters say Maryland state government should work to slow climate change and mitigate its effects.

More than 2-in-3 agree decisions on energy policy and economic development should take climate change into account, and nearly the same amount say Maryland should pass legislation to reduce carbon emissions.



Taxes

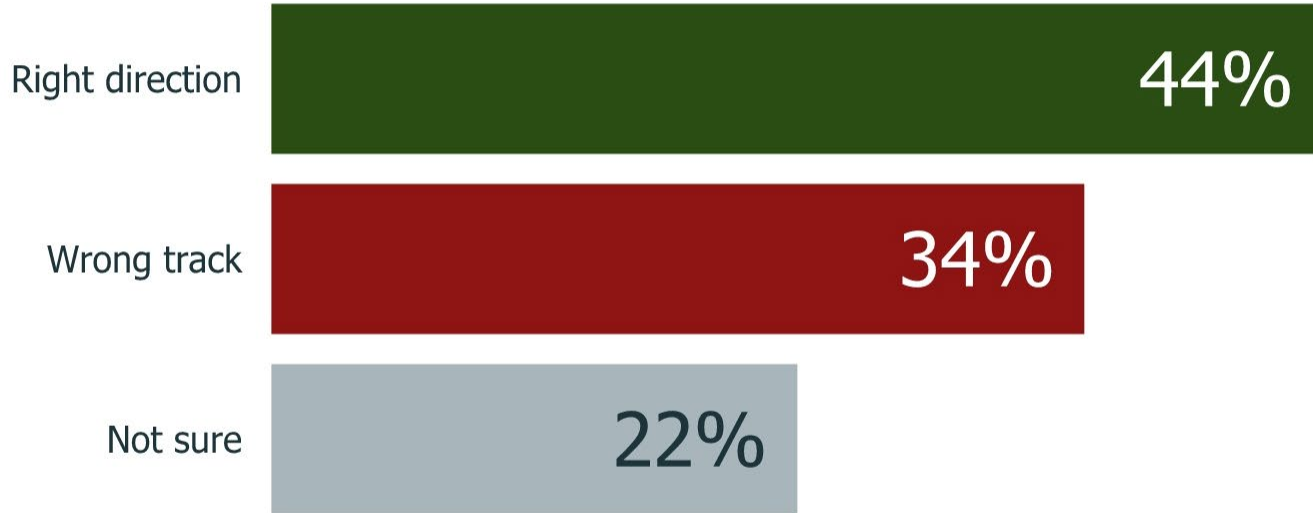
While somewhat tax adverse (57 percent say taxes in Maryland are too high), Maryland voters generally support increasing taxes over austerity (66 percent for investment, 15 percent for keeping taxes low).

Higher taxes on wealthy people and corporations and closing tax loopholes are broadly popular.



Voters split on state's direction

Maryland Direction

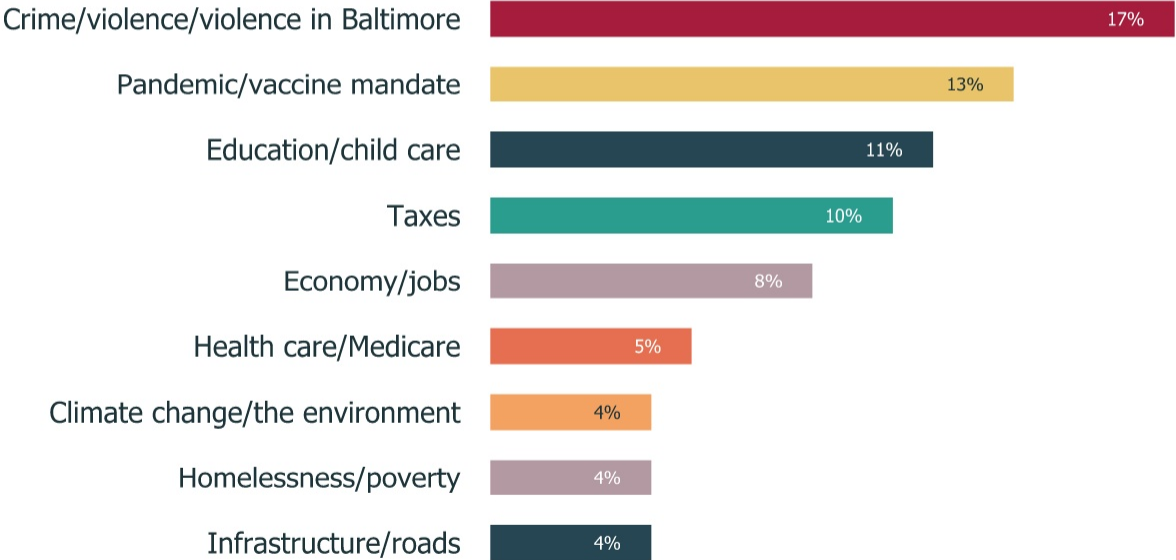


Q.5 Generally speaking, do you think that things in Maryland are going in the right direction, or do you feel things have gotten pretty seriously off on the wrong track?



Crime and pandemic top issues followed by education, taxes, and the economy

Biggest issues: Most Frequent



Q.7 What would you say is the biggest issues in Maryland that you would like the governor and General Assembly to focus on?



Crime pops as a concern among independents, Republicans, and in Baltimore DMA

Top Issues by Party ID and Media Market



Democrats

15% Pandemic/ vaccine mandate
13% Crime
13% Education



Independents

20% Crime
12% Pandemic/vaccine mandate



Republicans

20% Crime
20% Taxes



Washington DMA

15% Education
11% Pandemic/vaccine mandate
11% Taxes



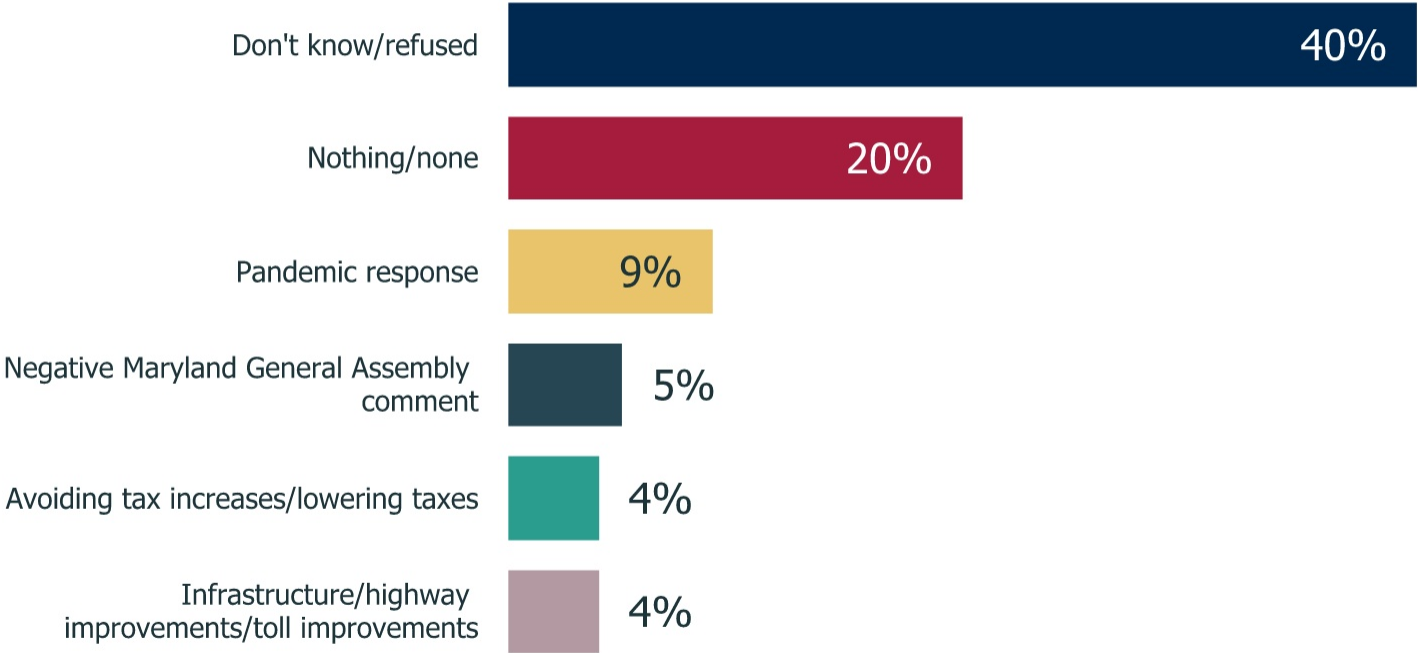
Baltimore DMA

26% Crime
16% Pandemic/vaccine mandate



Voters hard pressed to coalesce around GA accomplishments

Biggest accomplishment: Most Frequent



Q.8 What would you say is the biggest accomplishment the Maryland General Assembly has made during the last four years?



Across partisan, regional lines, voters have trouble coming up with GA accomplishment

General Assembly Biggest Accomplishment by Party ID and Media Market



Democrats

45% Don't know/refused
12% Nothing
11% Pandemic response



Republicans

32% Nothing
28% Don't know/refused
8% Negative MD General Assembly comment



Baltimore DMA

32% Don't know/refused
25% Nothing
10% Pandemic response



Independents

44% Don't know/refused
21% Nothing
10% Pandemic response



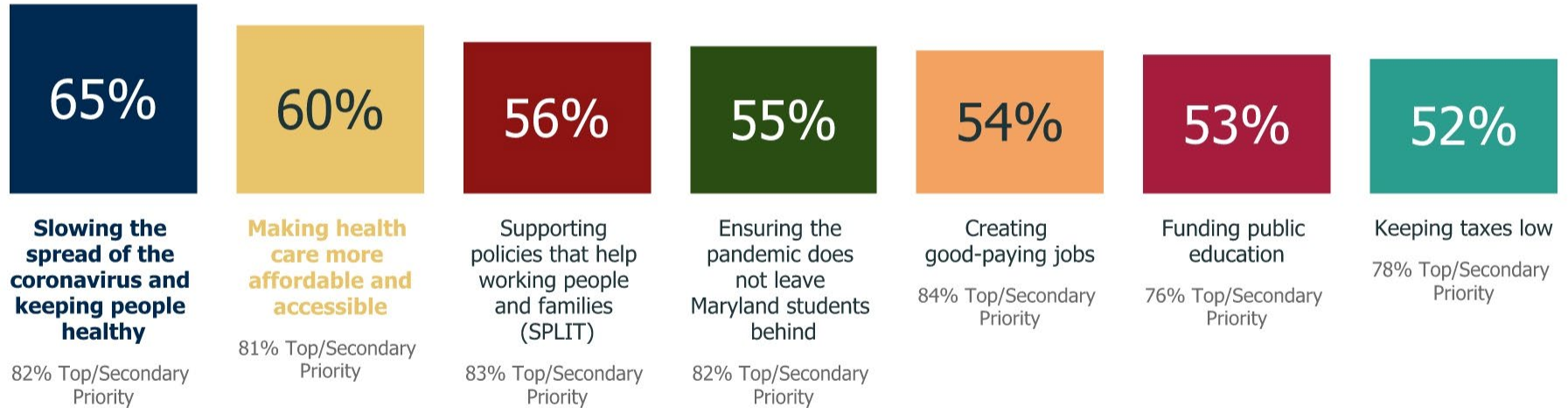
Washington DMA

49% Don't know/refused
16% Nothing
10% pandemic response



Health care concerns top list of priorities for elected officials

Top Tier Priorities: % Top Priority

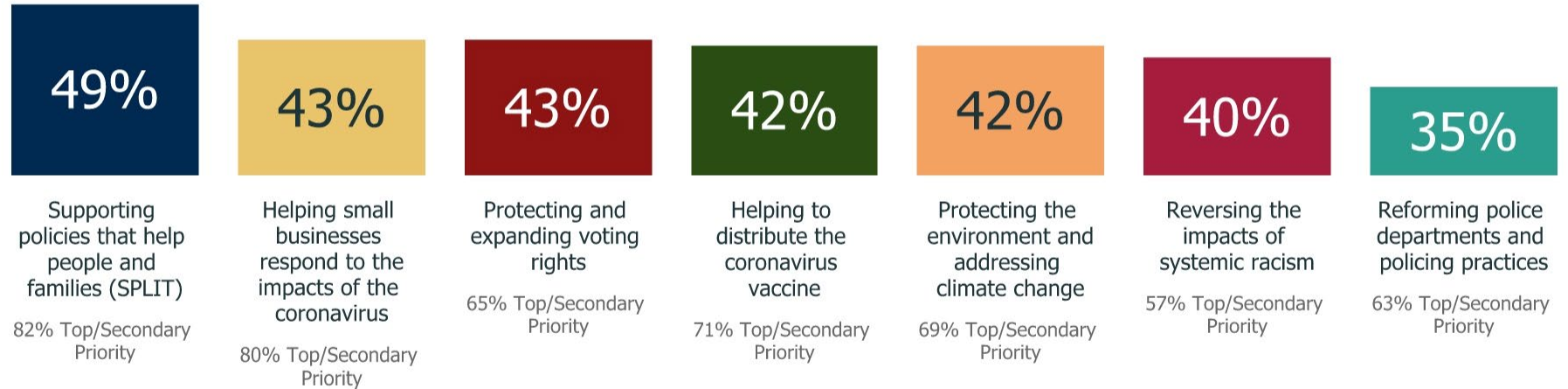


Q.9 Below is a list of priorities some voters have for their elected officials. Please indicate whether each one would be a top priority, a secondary priority, a small priority, or not a priority at all for you.



Second tier priorities

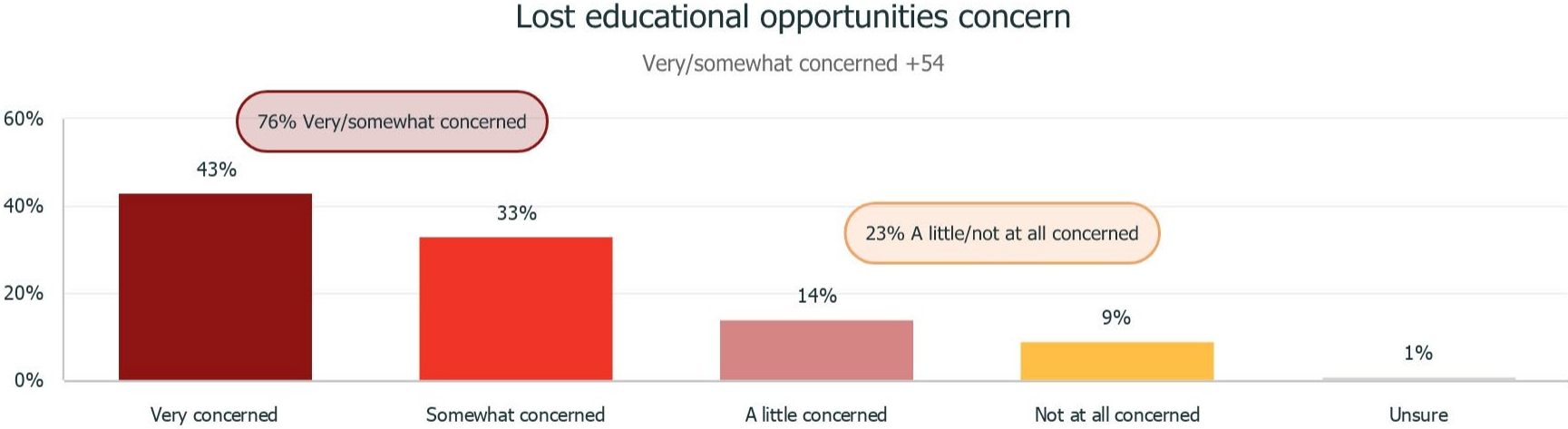
Second Tier Priorities: % Top Priority



Q.9 Below is a list of priorities some voters have for their elected officials. Please indicate whether each one would be a top priority, a secondary priority, a small priority, or not a priority at all for you.



Plurality of MD voters very concerned students have lost educational opportunities during the pandemic



Q.16 Would you say you are very concerned, somewhat concerned, a little concerned, or not at all concerned that Maryland students are losing educational opportunities during the pandemic?



Women of color most likely to report high levels of concern about children losing educational opportunities

Lost educational opportunities by race, race/gender, and gender/age

	Very concerned	Somewhat concerned	A little concerned	Not at all concerned
All voters	43%	33%	14%	9%
White	38%	34%	18%	9%
Black	49%	30%	11%	10%
Voters of color	50%	31%	9%	10%
White men	39%	26%	21%	13%
White women	37%	42%	14%	5%
Men of color	39%	33%	11%	18%
Women of color	59%	30%	7%	3%
Younger men	32%	31%	19%	17%
Older men	46%	27%	15%	13%
Younger women	48%	41%	7%	3%
Older women	47%	32%	16%	5%



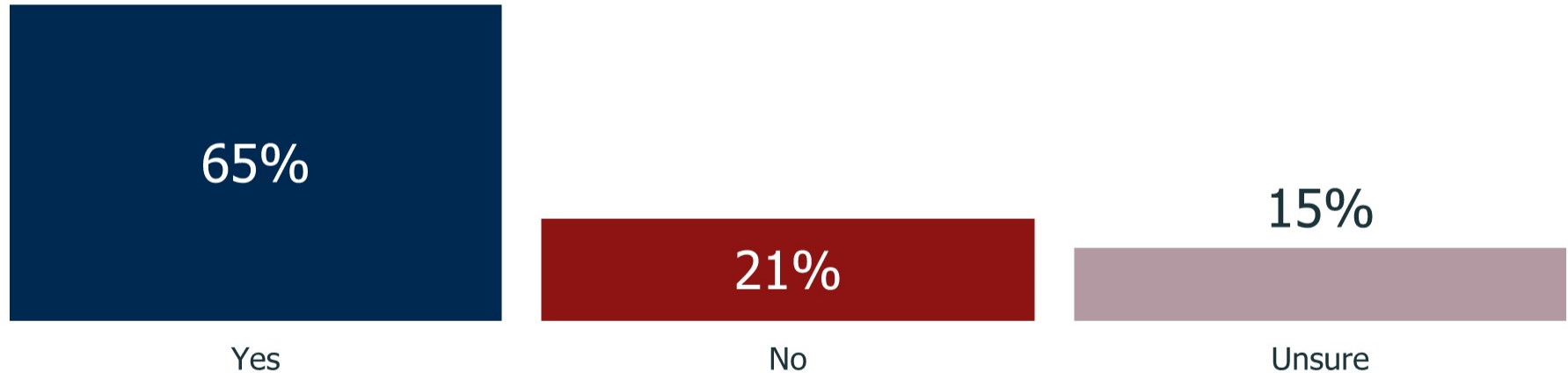
Urban voters more likely to be *very* concerned about lost educational opportunities

Lost educational opportunities by region

	Very concerned	Somewhat concerned	A little concerned	Not at all concerned
All voters	43%	33%	14%	9%
Rural	34%	38%	19%	9%
Suburban	41%	35%	16%	7%
Urban	50%	29%	9%	10%
Baltimore DMA	45%	32%	14%	9%
Washington DMA	40%	35%	14%	10%



2-in-3 believe the state should address economic barriers faced by Black people and the Black community



Q.10 Do you believe the state of Maryland should address economic barriers faced by Black people and the Black community?



Nearly all Black voters and just over half of white voters voice belief Maryland should address economic barriers faced by Black people

Belief MD should address economic barriers faced by Black people by race, race/gender, and gender/age

	Yes	No	Yes - No
All voters	65%	21%	+44
White	53%	25%	+28
Black	92%	7%	+85
Voters of color	80%	15%	+65
White men	50%	32%	+18
White women	56%	18%	+38
Men of color	70%	25%	+45
Women of color	88%	6%	+82
Younger men	69%	24%	+45
Older men	47%	35%	+12
Younger women	79%	10%	+69
Older women	61%	16%	+45



Broad support for employee protections

Top Tier Workplace Issue Proposals: % Strongly Support

51%

Prohibit employers from misclassifying workers as contractors to avoid paying for employee benefits such as overtime pay and workers' compensation.

79% Total Support

50%

Create wage boards that bring together businesses, government, and workers to ensure fair wages for employees across a specific industry and prevent employers from abusing the availability of cheap labor to drive down wages.

79% Total Support

50%

Require employers to accommodate employees' requests to be off on certain days or at certain times due to urgent needs like child care or college classes.

77% Total Support

42%

Require employers in Maryland to provide hourly wage workers with pay stubs in addition to their pay check or direct deposit.

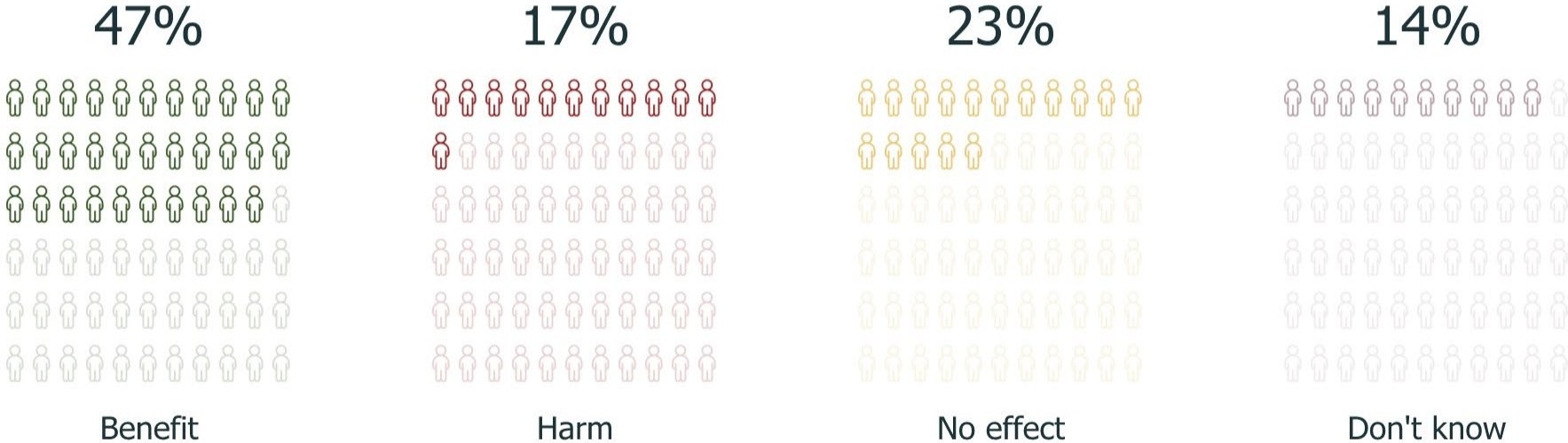
75% Total Support

Q.12 Please indicate if you strongly support, somewhat support, somewhat oppose, or strongly oppose each of the following proposals related to issues in the workplace.



Plurality of voters say requiring paid leave would benefit economy

Effect of requiring paid leave on Maryland's economy



Q.15 Would requiring paid family and medical leave benefit, harm, or have no effect on the economy in Maryland?



Partisan divide on effect of requiring leave

Effect of requiring paid leave on Maryland's economy by key demographics

	Benefit	Harm	No effect
All voters	47%	17%	23%
ID Democrat	59%	5%	24%
ID independent	48%	17%	23%
ID Republican	19%	41%	22%
Men	37%	25%	28%
Women	55%	11%	19%
18-49	61%	9%	22%
50+	31%	25%	23%
College graduate	48%	18%	21%
Non-college	44%	16%	25%



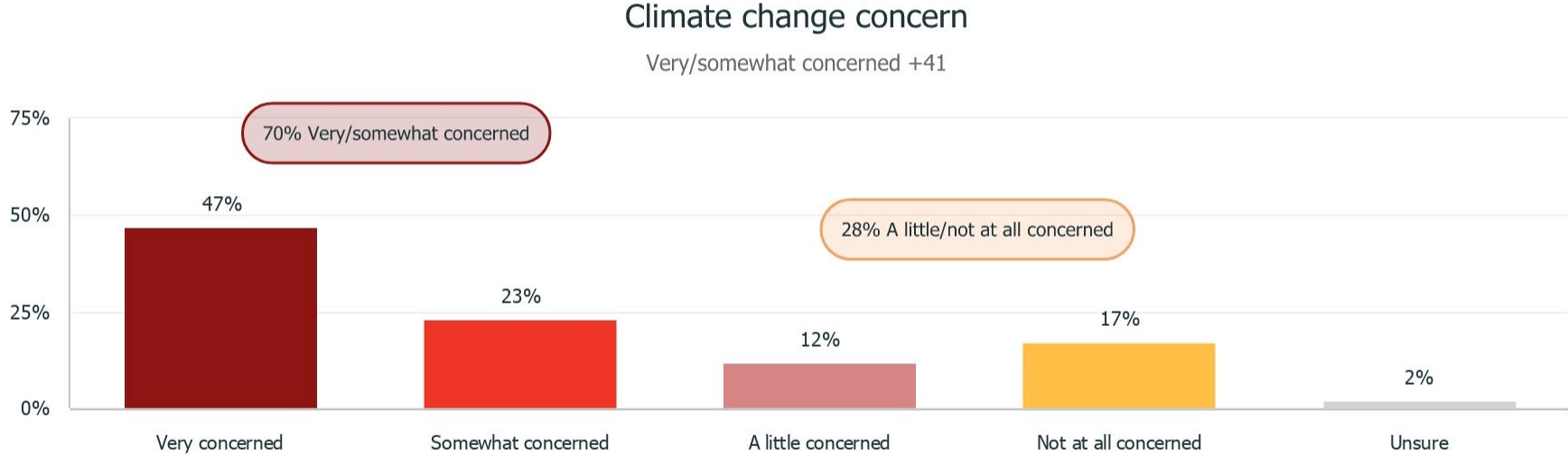
Support for paid leave's benefits highest among women under the age of 50

Effect of requiring paid leave on Maryland's economy by race, race/gender, and gender/age

	Benefit	Harm	No effect
All voters	47%	17%	23%
White	41%	22%	21%
Black	59%	12%	22%
Voters of color	54%	12%	25%
White men	30%	31%	28%
White women	51%	13%	16%
Men of color	47%	16%	28%
Women of color	59%	8%	21%
Younger men	55%	14%	26%
Older men	19%	35%	30%
Younger women	66%	6%	20%
Older women	43%	17%	17%



Concerns about global climate change are both intense and broad in Maryland



Q.22 Would you say you are very concerned, somewhat concerned, a little concerned, or not at all concerned about global climate change?



Attitudes about climate are polarized along partisan lines

Climate change concern by key demographics

	Very/somewhat concerned	A little/Not at all concerned	Very/somewhat - A little/Not at all
All voters	70%	28%	+41
ID Democrat	88%	10%	+78
ID independent	68%	31%	+37
ID Republican	37%	61%	-25
Men	61%	36%	+25
Women	77%	22%	+55
18-49	74%	25%	+49
50+	66%	33%	+33
College graduate	71%	28%	+43
Non-college	68%	30%	+39



Voters want Maryland state government to address climate change

Tax Statements: % Total Agree

76%

The state of Maryland should invest in current renewable energy technology and gradually expand investments in new technology in order to combat climate change.

17% Total Disagree

75%

State governments should invest in preparations for a future living with climate change.

16% Total Disagree

73%

The state of Maryland should make major investments and set ambitious goals in order to expand renewable energy and other new technology to combat climate change.

20% Total Disagree

36%

There is very little the Maryland governor and state elected officials can do to prevent or slow climate change and how it impacts people's lives.

55% Total Disagree

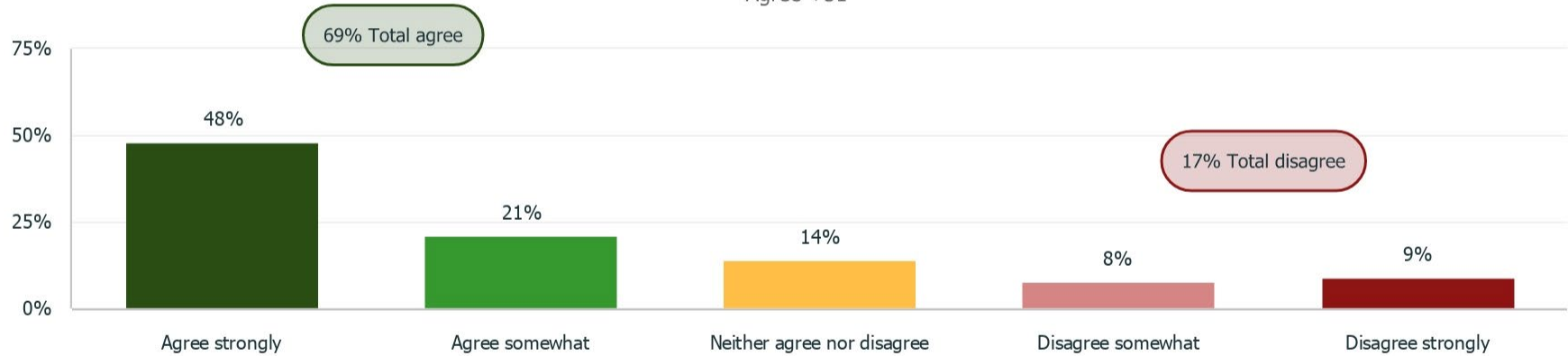
Q.24 Please indicate if you strongly agree, somewhat agree, somewhat disagree, or strongly disagree with each of the following statements.



More than 2-in-3 want policy decisions to take climate change into account

Take climate change into account

Agree +51



Q.21 Do you agree or disagree that the Maryland General Assembly and other policy makers should take climate change into account when deciding how to vote on issues such as energy policy and economic development?



9-in-10 Democrats, 2-in-3 independents want climate change taken into account

General Assembly take climate change into account by key demographics

	Agree	Disagree	Agree - Disagree
All voters	69%	17%	+51
ID Democrat	89%	4%	+86
ID independent	67%	18%	+49
ID Republican	31%	44%	-14
Men	61%	23%	+39
Women	75%	13%	+63
18-49	77%	13%	+65
50+	60%	22%	+37
College graduate	69%	20%	+49
Non-college	69%	15%	+54



Urban voters overwhelmingly want climate change taken into account

General Assembly take climate change into account by region

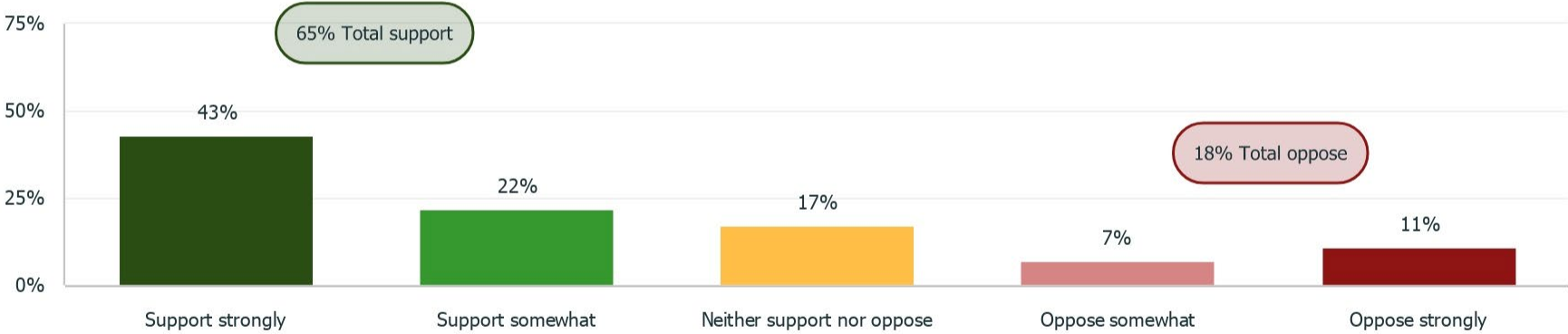
	Agree	Disagree	Agree - Disagree
All voters	69%	17%	+51
Rural	50%	28%	+22
Suburban	65%	22%	+43
Urban	81%	8%	+73
Baltimore DMA	61%	24%	+37
Washington DMA	78%	10%	+68



Majority support major legislation on carbon emission reductions

Support for legislation to reduce emissions

Agree +48



Q.23 Do you support or oppose the Maryland General Assembly passing major legislation to achieve significant reductions in carbon emissions?



Partisan, age divisions on legislation to reduce emissions

Support for legislation to reduce emissions by key demographics

	Support	Oppose	Support - Oppose
All voters	65%	18%	+48
ID Democrat	86%	6%	+80
ID independent	66%	21%	+44
ID Republican	26%	37%	-11
Men	63%	20%	+43
Women	68%	16%	+52
18-49	74%	12%	+62
50+	56%	23%	+33
College graduate	69%	16%	+53
Non-college	61%	20%	+41



Voters of color more supportive of legislation to reduce emissions than white voters

Support for legislation to reduce emissions by race, race/gender, and gender/age

	Support	Oppose	Support - Oppose
All voters	65%	18%	+48
White	57%	22%	+36
Black	80%	9%	+72
Voters of color	78%	12%	+66
White men	54%	25%	+29
White women	59%	18%	+41
Men of color	77%	12%	+65
Women of color	79%	12%	+67
Younger men	73%	10%	+62
Older men	53%	29%	+24
Younger women	76%	14%	+62
Older women	59%	18%	+41



Urban and suburban voters broadly support legislation to reduce emissions

Support for legislation to reduce emissions by region

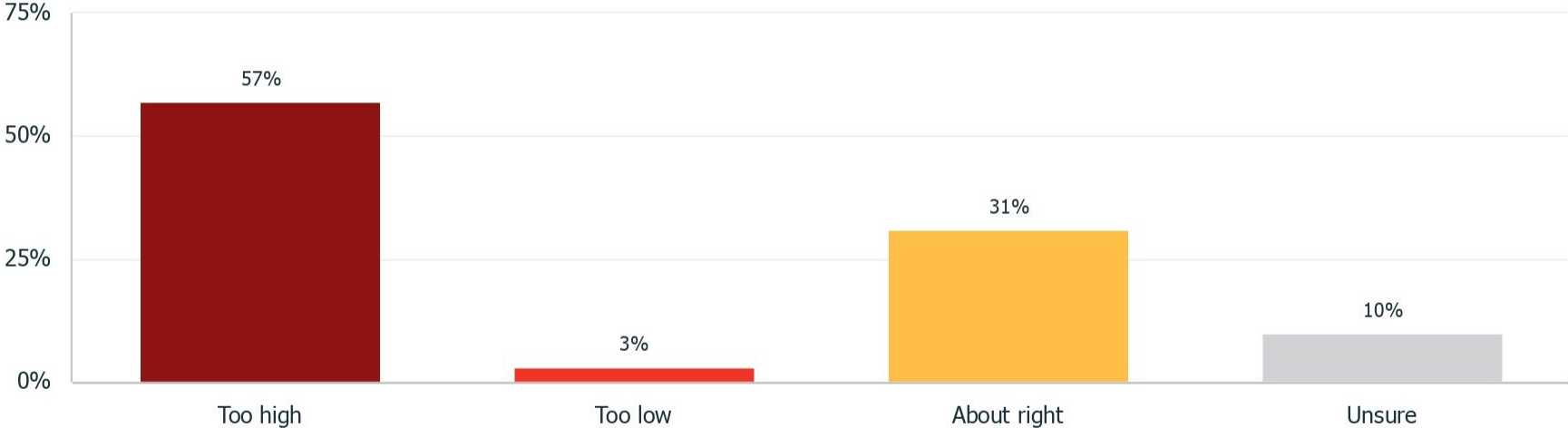
	Support	Oppose	Support - oppose
All voters	65%	18%	+48
Rural	46%	24%	+22
Suburban	62%	20%	+43
Urban	77%	13%	+64
Baltimore DMA	61%	21%	+40
Washington DMA	71%	14%	+57



Majority say taxes in Maryland are too high

Tax level in Maryland

Too high +54



Q.17 Do you believe taxes in Maryland are too high, too low, or about right?



“Too high” tends to be plurality position across the board

Tax level by key demographics

	Too high	Too low	About right
All voters	57%	3%	31%
ID Democrat	39%	4%	40%
ID independent	61%	1%	31%
ID Republican	88%	1%	10%
Men	63%	3%	27%
Women	51%	2%	34%
18-49	44%	3%	40%
50+	69%	2%	21%
College graduate	55%	2%	36%
Non-college	59%	3%	24%



Suburban voters in the Baltimore market likely to believe taxes are too high

Tax level by region

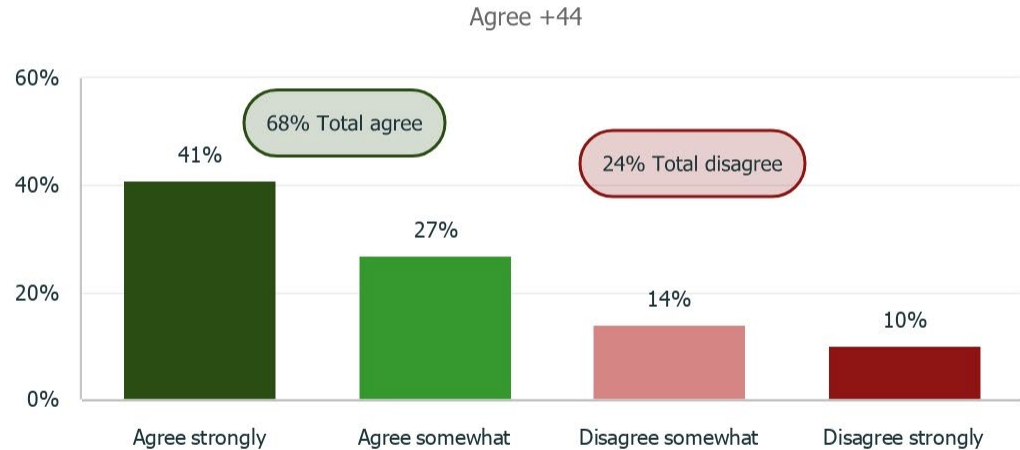
	Too high	Too low	About right
All voters	57%	3%	31%
Rural	64%	4%	19%
Suburban	59%	2%	32%
Urban	51%	3%	36%
Baltimore DMA	61%	2%	27%
Washington DMA	51%	3%	34%



More than 2-in-3 say state should cut spending instead of raising taxes

Maryland has too many taxes. Raising taxes on Marylanders will harm our economy, punish retirees, and make it easier for lawmakers to tax the rest of us in the future. The General Assembly should focus on cutting spending, waste, fraud, and abuse.

Focus on cutting spending, waste, fraud, and abuse



Q.20 Please indicate if you strongly agree, somewhat agree, somewhat disagree, or strongly disagree with each of the following statements.



But that does not mean Maryland voters don't want to invest in the state and its residents

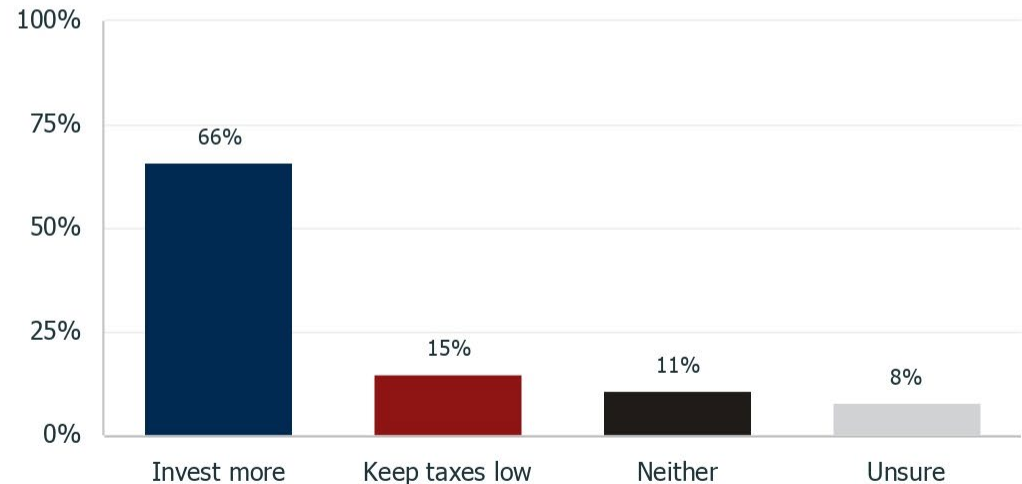
Q.11 Switching gears a bit -- which of these statements comes closer to your own view, even if neither of them is exactly right?

State government in Maryland should invest more in the state and its residents, ensuring they are safe, healthy, and economically secure, even if it means corporations and the wealthy have to contribute more in taxes.

State government in Maryland should keep taxes low, even if it means cutting funding for education and infrastructure, and cutting unemployment insurance and healthcare coverage.

Invest more or keep taxes low

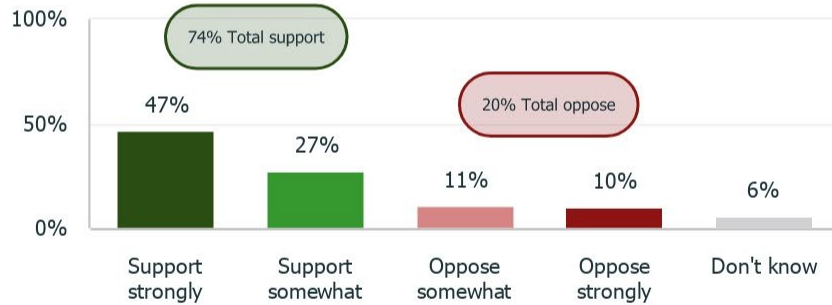
Invest more +51



Maryland voters generally support higher taxes on the wealthy and corporations

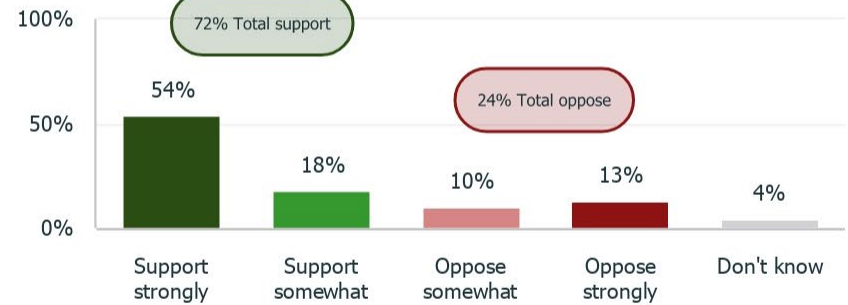
Higher taxes on wealthy and corporations

Support +54



Higher taxes on wealthy and corporations to pay for job training, education, teacher pay

Support +49

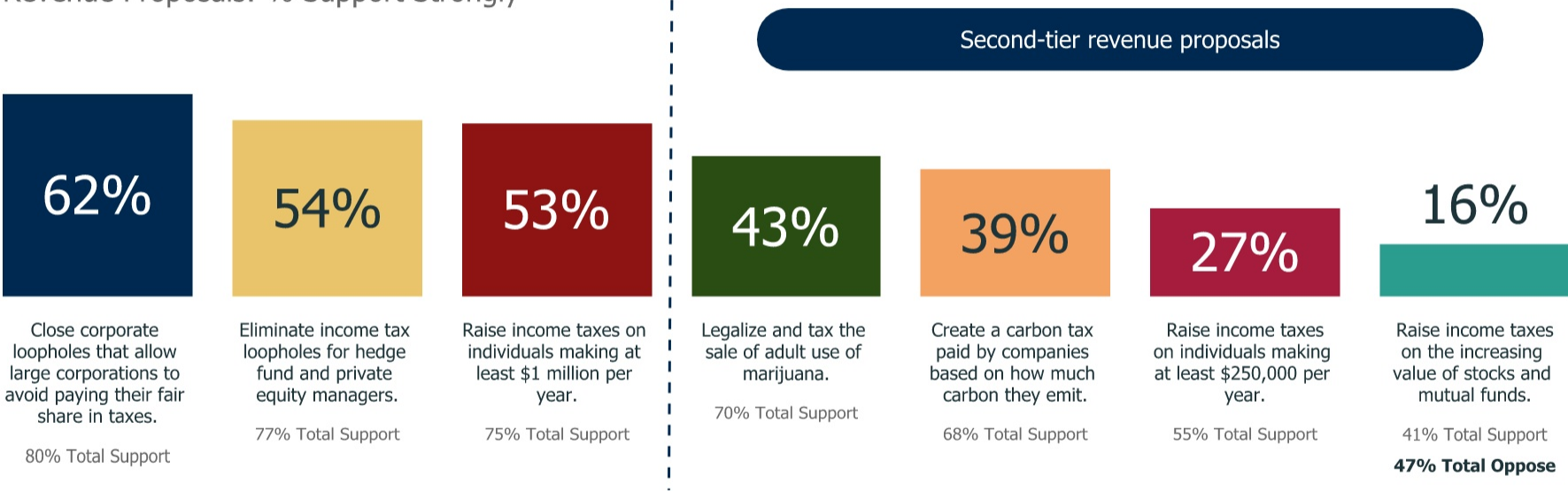


Q.13 (SPLIT A) Do you support or oppose higher taxes on wealthy corporations and the state's wealthiest residents?
Q.14 (SPLIT B) Do you support or oppose higher taxes on wealthy corporations and the state's wealthiest residents that would go towards job training programs, public education, and teacher pay?



Closing corporate tax loopholes and raising taxes on millionaires most popular revenue proposals

Revenue Proposals: % Support Strongly



Q.19 Please indicate if you strongly support, somewhat support, somewhat oppose, or strongly oppose each of the following proposals that will raise revenue for the state budget in Maryland.



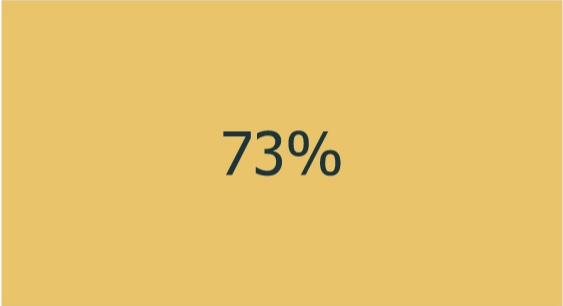
Regardless of the argument, overwhelming majority of Maryland voters agree with statements that advocate for closing corporate tax loopholes

Tax Statements: % Total Agree



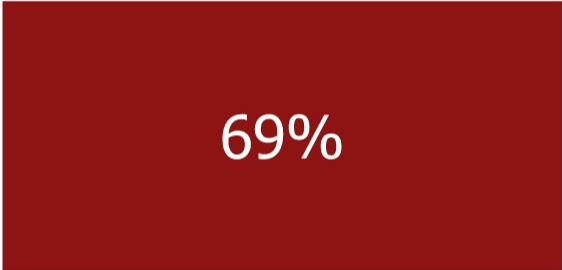
Maryland should close corporate tax loopholes and increase the tax rate for the very wealthiest, and place those revenues in our General Fund. It's a matter of basic fairness that everyone should pay their fair share.

18% Total Disagree



Maryland should close corporate tax loopholes and increase the tax rate for the very wealthy, provided that the revenue is dedicated to supporting schools and teachers. Strong schools mean a strong economy.

20% Total Disagree



Maryland should close corporate tax loopholes and increase the tax rate for the very wealthy, provided that the revenue is dedicated to investing in improving and expanding transportation, and providing more free public transportation.

23% Total Disagree

Q.20 Please indicate if you strongly agree, somewhat agree, somewhat disagree, or strongly disagree with each of the following statements.



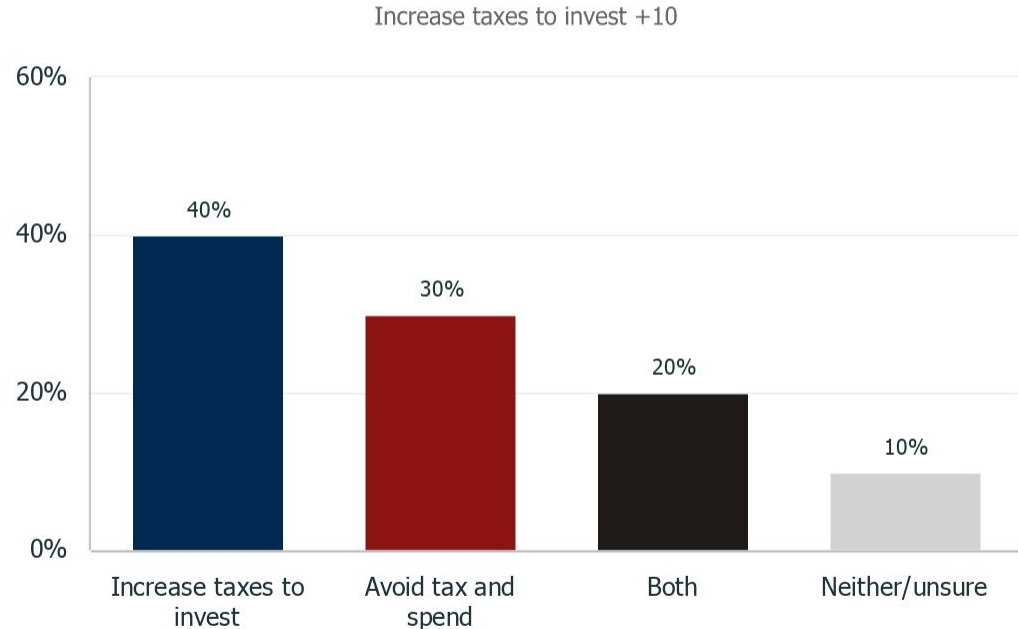
Tax argument is muddy in the end

Q.18 Please indicate which of the following statements about taxes comes closer to your own view, even if neither one of them is exactly right.

Wealthy corporations and wealthy and well-connected Marylanders don't pay their fair share in taxes. We should increase taxes on them to help pay for investments in infrastructure, education, and health care.

At a time when small businesses are struggling to find workers and stay afloat, the last thing we should do is increase taxes. The tax and spend agenda has led to higher prices and a culture of handouts.

Increase taxes to invest vs. avoid tax and spend agenda



Sharp partisan divide on increasing taxes; independents split

Tax increase by key demographics

	Increase taxes to invest	Avoid tax and spend	Increase taxes to invest - Avoid tax and spend
All voters	40%	30%	+10
ID Democrat	59%	14%	+45
ID independent	35%	29%	+6
ID Republican	14%	60%	-47
Men	39%	35%	+4
Women	40%	26%	+14
18-49	47%	26%	+22
50+	32%	35%	-3
College graduate	46%	29%	+17
Non-college	32%	31%	+1



White men, men over 50 most likely to say MD should avoid tax and spend agenda

Tax increase by race, race/gender, and gender/age

	Increase taxes to invest	Avoid tax and spend	Increase taxes to invest - Avoid tax and spend
All voters	40%	30%	+10
White	40%	37%	+3
Black	45%	16%	+29
Voters of color	40%	21%	+19
White men	37%	45%	-8
White women	41%	29%	+12
Men of color	43%	21%	+22
Women of color	37%	20%	+17
Younger men	49%	22%	+27
Older men	30%	48%	-19
Younger women	45%	28%	+16
Older women	35%	23%	+11



Questions?



Ben Lazarus

Director of Research Solutions

TargetSmart

ben.lazarus@targetsmart.com

m: (734) 649-3438